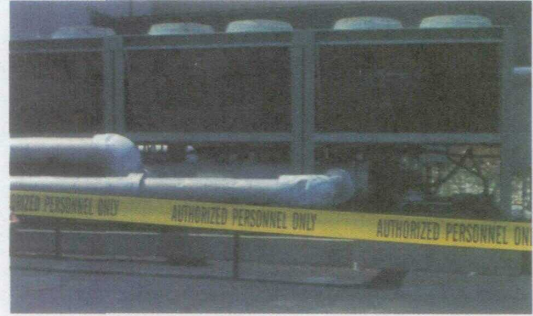


Barricade Tape

VISUAL WARNINGS



Visual barricading provides fast on-the-spot warning of potential danger.

- Made of non-adhesive B-912 polyethylene
- Use for temporary outdoor or permanent indoor applications
- Lightweight tape can be tied, stapled or nailed to posts, fences or metal barricades
- Variety of legends available
- Two roll sizes available: 3" x 200' and 3" x 1,000'
- Standard package: one roll

Custom Barricade Tape legends are also available. Contact your local Brady Distributor for more information.



Legend	Color	Catalog Number		Price Per 1000' Roll
		3" x 200'	3" x 1000'	
AUTHORIZED PERSONNEL ONLY	Black/Yellow	91468*	91462*	\$37.85
CAUTION	Black/Yellow	91212	91450	\$37.85
CAUTION BIOHAZARD	Black/Orange	91447	91448	\$37.85
CAUTION CHEMICAL HAZARD	Black/Yellow	91469	91463	\$37.85
CAUTION CONSTRUCTION AREA	Black/Yellow	91217	91453	\$37.85
CAUTION DO NOT ENTER	Black/Yellow	91224	91451	\$37.85
CAUTION HIGH VOLTAGE	Black/Yellow	91220	91458	\$37.85
CAUTION MEN WORKING	Black/Yellow	91215	91452	\$37.85
CAUTION OPEN TRENCH	Black/Yellow	91227	91457	\$37.85
CAUTION RADIATION HAZARD	Magenta/Yellow	91470	91464	\$37.85
CONFINED SPACE DO NOT ENTER	Black/Yellow	91256	91257	\$37.85
DANGER	Black/Yellow	91213	91455	\$37.85
DANGER	Black/Red	91200	91201	\$37.85
DANGER ASBESTOS DUST HAZARD	Black/Yellow	91255	91456	\$37.85
	Black/Yellow	91214	91454	\$37.85

*Legend is on 2 lines

Reinforced Barricade Tape

Legend	Color	Size	Catalog Number	Price Per Roll
CAUTION	Black/Yellow	3" x 500'	91100	\$46.73
CAUTION CONSTRUCTION AREA	Black/Yellow	3" x 500'	91101	\$46.73
CAUTION DO NOT ENTER	Black/Yellow	3" x 500'	91102	\$46.73
CAUTION MEN WORKING	Black/Yellow	3" x 500'	91103	\$46.73
	Black/Yellow	3" x 500'	91104	\$46.73

- Stronger than ordinary Barricade Tape
- No stretch or sag in sunlight or wind
- Tough enough to be used again and again
- Black lettering on yellow background
- Five standard legends available
- Roll size: 3" x 500'
- Standard package: one roll



Reinforced Barricade Tape provides long-lasting hazard protection even with long distances between tie points.

Economy Grade Barricade Tape

- Made of lightweight polyethylene
- Ideal for temporary use outdoors or permanent indoor warning
- Yellow with black horizontal stripes
- Available in two roll sizes: 1" x 500' and 3" x 500'
- Standard package: one roll

Size	Color	Catalog Number	Price Per Roll
1" x 500'	Black/Yellow	91237	\$ 7.22
3" x 500'	Black/Yellow	91238	\$ 16.50



Block off potential hazards with Economy Grade Barricade Tape.

Technical Data Non-Adhesive Materials

Material	Description	Thickness (mils)	Upper Temp. Limit	Average Outdoor Durability (years)
B-1	rigid plastic engraved tags and signs	60	193° F, 89°C	5-8
B-73	heavy plastic fastener with self-locking male grid	104	220° F, 104°C	5-7
B-79	nylon strapping with grip-lock insert on banding heads	60	185° F, 85°C	2-3
B-74	stainless steel strapping	20	500° F, 260°C	over 20 years
B-81	braille signage	95	193° F, 90°C	up to 2
B-101	polycoated tagstock	17.5	158° F, 70°C	0
B-120	fiberglass reinforced plastic sign with fade resistant embedded graphics	100	190° F, 88°C	15
B-130	fiberglass reinforced marking stake	155	160° F, 70°C	8-12
B-317	synthetic tag stock for thermal transfer printing	30	230° F, 110°C	1-2
B-401	surface printed plastic safety sign	65	150° F, 65°C	1-2
B-417	stainless steel tag - durable label	70	280° F, 138°C	3
B418	plastic tags with durable label	155	260° F, 127°C	3-5
B-450	polyethylene sheet material	55	180° F, 82°C	3-5
B-454	printed treated aluminum sheet	varies	250° F, 121°C	8-12
B-539	nylon resin radio frequency tag	222	320° F, 160°C	8
B-541	photosensitive anodized aluminum double coated teflon barcode tag	32	500° F, 260°C	10
B-555	aluminum safety sign with protected graphics	44	212° F, 100°C	5-8
B-689	coiled printed plastic sheets with sealed color graphics	8	248° F, 120°C	5-8
B-720	overcoated polyethylene film	4	130° F, 54°C	NA
B-721	detectable indentoline	4.5	180° F, 82°C	5-8
B-748	stainless steel valve tag	23	248° F, 120°C	5-7
B-749	injection molded acrylic tag cover	NA	160° F, 71°C	5-8
B-751	porcelain enamel pipe marker	84	1000° F, 538°C	5-8
B-756	aerosol marking paint	NA	212° F, 100°C	up to 5 yrs
B-817	low halide, coiled, printed plastic sheet	varies	varies	5-8
B-825	polyolefin lockout tags	10	160° F, 70°C	0
B-829	stainless steel marker	16	260° F, 127°C	3-6
B-831	laminated polyester sign	28	210° F, 99°C	2-4
B-833	polyester tag with sealed graphics	30	193° F, 90°C	1-2
B-836	fluted polypropylene sheet	156	130° F, 54°C	up to 1
B-837	printed paper sealed in write-on polyester pouch	28	175° F, 79°C	up to 2
B-838	printed paper identification sealed in polyester pouch	28	175° F, 79°C	up to 2
B-839	rigid vinyl tag with polyester overlamine	17	140° F, 60°C	up to 2
B-841	ink jet/laser printable polyester	6	194° F, -90°C	1
B-842	ball valve lockout device	NA	248° F, 120°C	NA
B-851	surface printed OSHA tag	10	230° F, 110°C	1-2
B-852	printed tag sealed in write-on laminate	14	230° F, 110°C	2
B-853	surface printed cardstock	10	194° F, 90°C	NA
B-883	pultruded fiberglass pipe marker carrier	90	230° F, 110°C	5-8
B-893	injection molded clip for pipe marker carrier	NA	248° F, 120°C	5-8
B-900	molded polyethylene warning post and chain	NA	270° F, 132°C	up to 2
B-902	mechanically affixed pipe marker base with B-946 vinyl marker	varies	180° F, 82°C	5-8
B-903	woven polypropylene strap	15, 20	130° F, 54°C	up to 2
B-906	anodized aluminum sheeting	40	270° F, 132°C	3-6
B-907	brass sheeting	40	above 420° F, 216°C	up to 2
B-909	polycarbonate/acrylic laminate	132	212° F, 100°C	5-8
B-911	laminated polyester tag	25	250° F, 121°C	2-4
B-912	polyethylene film	3	130° F, 54°C	up to 2
B-915	coiled, printed plastic sheet	varies	varies	5-8
B-925	aluminum with modified polyester coating	24	250° F, 121°C	8-12
B-959	reflective sheeting on aluminum signs	70	200° F, 93°C	5-8

Definitions and Key

Upper Temperature Service Limit:

Temperature above which material will fail in long term use.

Average Outdoor Durability:

Average expected outdoor life of product will depend on user definition of failure, climatic conditions, mounting techniques, material color, and printing inks used. Call Brady Signmark® for specific recommendations.

Chemical Resistance:

Chemical resistance information can be obtained from specific materials Technical Data Sheets.



Review complete material data including chemical resistance testing on-line at www.bradysignmark.com.