

LABORATORY IDENTIFICATION

Labels, printers & software for the laboratory



About BRADY



Once you have worked with BRADY, our name will stick with you, (just like our labels) because BRADY is one of the world's leading labelling and identification specialists.

Innovative

At BRADY we continue to improve. We have many customers from all industries, and we strive to be ahead of their needs by continuing to invest in research for even more performant solutions. By developing more user-friendly and efficient concepts, we give our thousands of customers the best in the market.

Strength

At BRADY, we believe our biggest strength is the wide range of identification and safety solutions we can offer our customers, whether it's labelling the smallest component or complete signage for an entire warehouse. We're also proud to offer many products and services - from printers, scanners and software to service contracts and on-site training - that compliment any identification job.

And don't forget, our wide network of expert distributors can always offer you a tailor-made solution to meet your specific requirements.

Trust

For almost a hundred years, BRADY has been connected with quality, trust and stability. We demand the best for your products and services, because we know, better than anyone, the importance of good and reliable identification. Identification looks like a small detail, but every professional knows that this kind of detail is crucial to any business.

Inform

We also have specialised dealers in your region, who can answer all your identification and labelling questions, specific to your activity. They will be happy to provide you with all kinds of options and solutions with no obligation.



Brady products are sold on the condition that the purchaser will test them in actual use and determine for himself/herself their suitability to his/her intended purpose. Brady warrants to the purchaser that Brady products are free from defects in material and workmanship but limits its obligation under this warranty to the replacement of the product which has been shown to Brady's satisfaction to have been defective at the time of its purchase.

The warranty does not extend to any persons who have acquired the product from the purchaser. It is in lieu of any other warranty, including every warranty of sale-ability, marketability or suitability for the intended purpose, and is also in lieu of any other obligation or liability on the part of Brady.

Under no circumstances will Brady be liable for losses, damage, costs or subsequent damage of whatever nature which may arise in connection with the use of, or inability to use, Brady's products.

SIMPLIFY YOUR LABORATORY IDENTIFICATION.....4

CHOOSE YOUR APPLICATION5



Vial / Tube Labels 6



Vial Top Labels 11



Centrifuge / Eppendorf / PCR Tube Labels 14



Conical / Large Tube Labels 18



Slide Labels..... 23



Straw Labels 25



Well Plate Labels..... 27



Bottles / Flasks / Dishes / General Lab ID 30



Bottle Tamper Seal Labels 33



BSP™31 Label Attachment System 34



Tissue Cassette Labels 35

CHOOSE YOUR PRINTER36



BMP™21 Hand-held Label Printer / BMP™51/BMP™53 Label Makers..... 37



LABXPRT™ Laboratory Labelling System..... 38



BMP™71 Portable Label Printer..... 39



BBP™11 Desktop Thermal Transfer Printer 40



IPT™ Thermal Transfer Printer..... 41



BradyPrinter™ BP-PR Plus Printer..... 42



Label Creation Software 43



Scanners for Laboratories..... 44



Hazardous Substance Symbols..... 45



Lean Laboratory - Sorbent Products..... 47



Miscellaneous Products 50

Brady's line of laboratory identification products are designed to serve the world's biotechnology, agricultural, environmental and forensic researchers. Whether you work in pathology, histology, chromatography or other areas of science, Brady labelling solutions can help you maintain Good Laboratory Practice (GLP). The new products meet four current labelling challenges associated with sample container tracking:

- Labels that “match” existing vial, slide, and well plate sizes
- Labels that are readable by everyone, every time
- Labels that are durable under extreme conditions, including freezer storage, liquid nitrogen, autoclave and hot water baths and are resistant to solvents including Xylene, DMSO and Ethanol
- Easy bar coding and scanning allowing researchers to include more label information and drastically reduce human error

HAND-WRITTEN VERSUS PRINTED LABELS



HAND-WRITTEN LABELS

- Hand-written information is difficult to read
- Ink smears easily when handled
- Limited write-on area
- Time consuming
- Ink fades while stored long term
- Chemicals and solvents wash away ink



BRADY PRINTED LABELS

- Ink won't smear or fade
- Crisp, clear and readable text
- More information fits on label
- Quickly and easily design and print labels (auto serialize)
- Increased legibility/durability
- Chemical and solvent resistant

LAB-DURABLE LABELS



Brady's special self-laminating or wrap around label protects your label's legend from extreme temperature, chemicals and solvents.

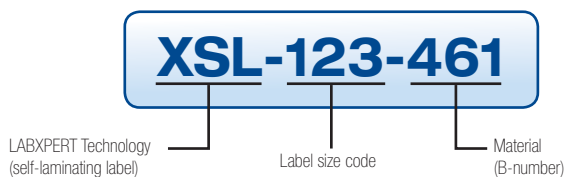
**For best adhesion, we recommend that you do not touch the adhesive side of the label when wrapping it around your vial or tube.*



- Printing is readable every time
- Clear portion wraps around and laminates the legend
- Provides window to view liquid level inside vial
- Low profile label resists jamming in centrifuge or racks
- Labels withstand liquid nitrogen (-196°C), freezer (-80°C), autoclave (+121°C) and chemicals like Xylene

PART NUMBER EXPLANATION

Most Brady references for printable labels follow the same three-part format: the first code indicates the technology, the second part is a number indicating the label size (where applicable) and the third part indicates the Brady material (where applicable).





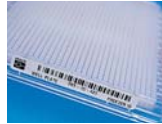
Vial/Tube



Slide



Conicals/bottles



Well Plate



Straw



Tissue cassette



General Lab ID

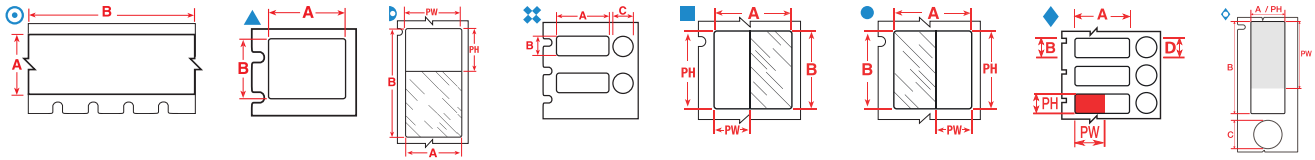
Material	Printer Ribbon	Temp (°C) (Tested for 30 days)		APPLICATION							ENVIRONMENT			OTHER QUALITIES
				Vial/Tube	Slide	Conicals/Bottles	Well Plate	Straw	Tissue Cassette	General Lab ID	Freezer	Liquid Nitrogen	Autoclave (121°C)	
Freezerbondz™ Polyester														
B-492	R-6400	-196 °C	130 °C	✓	✓	✓	✓	✓	✓	✓	✓	✓	✓	Can be applied to frozen surfaces including glass and polypropylene stored in liquid nitrogen; Low profile
FreezerBondz™ Polyester														
B-490	R-4306	-196 °C	130 °C	✓	✓	✓		✓	✓	✓	✓	✓	✓	Can be applied to frozen surfaces including glass and polypropylene stored in liquid nitrogen. Material must slightly overlap itself.
Nylon Cloth														
B-499	R-4300, R-6000, R-6200B	-196 °C	90 °C	✓	✓	✓		✓	✓	✓	✓			Permanent adhesion; write-on capabilities. Temperature range increases to 121°C when used in autoclave process. Tested 3 cycles of 1 hour in 121°C at 15 psi for autoclave process.
Paper														
B-424	R-4300, R-7950	-80 °C	50 °C		✓			✓	✓					Permanent adhesive; write-on capabilities; good contrast and smear resistance
Polyester														
B-423	R-6000, R-4410	-70 °C	120 °C			✓		✓	✓	✓				Permanent acrylic adhesive; ideal for flat surfaces. Suitable to adhering to glass, but not polypropylene
B-430	R-6000	-80 °C	120 °C			✓		✓	✓	✓				Clear polyester with permanent acrylic based adhesive; withstands numerous solvents and can be applied to variable surfaces
B-432	R-6000	-40 °C	100 °C			✓		✓	✓	✓				Clear polyester with permanent acrylic based adhesive; withstands numerous solvents and can be applied to variable surfaces
B-433	R-6000	-70 °C	100 °C					✓	✓	✓				Removable; ideal for flat surfaces. Suitable to adhering to glass, but not polypropylene
B-461	R-4300	-196 °C	130 °C	✓	✓		✓		✓	✓	✓	✓	✓	Permanent adhesive; suitable for liquid nitrogen application if material is wrapped around itself, as in self-lamination; write-on capabilities. Temperature range increases to 121°C when used in autoclave process
B-482	R-6400	-80 °C	130 °C					✓	✓	✓	✓			The B-482 label material, combined with Brady's R-6400 ribbon, provides the durability and print quality that histology and anatomic pathology labs need for accurate, identifiable specimen labelling. Paraffin and solvent resistant.
B-488	R-4300	-80 °C	120 °C	✓	✓			✓	✓	✓				Permanent acrylic adhesive; ideal for flat surface; write-on capabilities; excellent solvent resistance and xylene resistance
B-8423	R-6000	-80 °C	120 °C		✓			✓	✓	✓				Permanent acrylic adhesive, semi-gloss finish; excellent for bar code labels
Polypropylene														
B-425	R-6400	-70 °C	100 °C	✓	✓	✓		✓	✓					Excellent solvent resistance
B-449	R-7961	-80 °C	90	✓	✓			✓	✓	✓				Ideal for temporary labelling applications. Removable from flat surfaces; write-on capabilities; Tested 3 cycles of 1 hour in 121°C at 15 psi for autoclave process.
StainerBondz™ Polyester														
B-481	R-6400	-80 °C	130 °C		✓			✓	✓	✓	✓			Clear polyester will remain resistant when exposed to xylene and other chemicals that are commonly used in the slide staining process
Tamper-resistant Vinyl														
B-351	R-6200	-80 °C	120 °C			✓		✓	✓					Tamper-evident with a permanent acrylic adhesive; fractures easily to prevent removal
B-7351	R-6210	-40 °C	100 °C			✓		✓	✓					Tamper-evident with a permanent acrylic adhesive; fractures easily to prevent removal
Vinyl														
B-427	R-4300	-80 °C	70 °C	✓	✓		✓		✓	✓				Permanent acrylic adhesive; self-laminating; write-on capabilities; suitable for liquid nitrogen application and can be used to identify a frozen vial if label material is wrapped around itself, as in self-lamination. Temperature range goes to -196°C if material is wrapped around vial and overlaps itself
B-439	R-6010, R-4900, R-4410	-80 °C	40 °C			✓		✓	✓					Available in Blue, Green, Orange, Red, White and Yellow
B-595	R-6000, R-4400, R-6900	-40 °C	82 °C			✓		✓	✓					Available in White, Red, Yellow, Green, Blue, Orange, Black, Grey, Brown, Gold, Purple and Clear
Vinyl Cloth														
B-498	R-4300	-40 °C	80 °C	✓	✓	✓		✓	✓	✓				Removable from flat surfaces; write-on capabilities

CHOOSE YOUR APPLICATION

Vial / Tube Labels

- F** Freezer environment
- N** Liquid nitrogen environment
- A** Autoclave environment
- H** Hot water bath (100°C)
- S** Self-laminating label
- L** Low-profile (extremely thin) label
- R** Removable

i Brady's vial and test tube labels are designed to withstand extreme laboratory solvents like Xylene, Ethanol, Alcohol and DMSO, ensuring that the specimen identification is always legible - and will not smear, fade or fall off.



BMP™21 HAND-HELD LABEL PRINTER

Special Properties	Order Reference	Label Width A (mm)	Label Length B (m)	Labels per Cartridge/Roll	Diagram
0.6 ml Vial/Tube					
FNA	M21-375-499	9.53	4.80	Continuous	⊙
FNAHSL	M21-375-461	9.53	6.40	Continuous	⊙
1.5 ml Vial/Tube					
FNA	M21-500-499	12.70	4.80	Continuous	⊙
FNAHSL	M21-500-461	12.70	6.40	Continuous	⊙
2.0 - 50.0 ml Vial/Tube					
FNA	M21-750-499	19.05	4.80	Continuous	⊙
FNAHSL	M21-750-461	19.05	6.40	Continuous	⊙



BMP™51/BMP™53 LABEL MAKERS

Special Properties	Order Reference	Label Width A (mm)	Label Height B (mm)	Label Length B (m)	Diameter C (mm)	Printable Area Width (mm)	Printable Area Height (mm)	Labels per Cartridge/Roll	Diagram
0.6 - 2.0 ml									
FNAHSL	MC-500-461	12.70	-	7.62	-	12.70	-	Continuous	⊙
0.6 ml									
FNAHSL	MC-375-461	9.53	-	7.62	-	9.53	-	Continuous	⊙
FN L	M-130-492	9.53	20.96	-	-	-	-	220	▲
FNA	M-130-499	9.53	20.96	-	-	-	-	220	▲
F AHSL	M-72-461	12.70	44.45	-	-	12.70	19.05	180	▢
FNAHSL	M-123-461	28.58	9.53	-	-	19.05	9.53	360	■
FNAHSL	M-122-461	28.58	12.70	-	-	19.05	12.70	360	■
FNAH L	M-112-490	31.75	9.53	-	-	-	-	360	▲
1.0 - 8.0 ml									
FN L	M-131-492	12.70	25.40	-	-	-	-	180	▲
FNA	M-131-499	12.70	25.40	-	-	-	-	180	▲
FNAHSL	M-74-461	12.70	55.88	-	-	12.70	19.05	140	▢
FNAHSL	M-126-461	15.24	45.72	-	-	15.24	25.40	180	▢
FNAH L	M-126-490	15.24	45.72	-	-	-	-	180	▲
FNAHSL	M-86-461	15.24	66.68	-	-	15.24	25.40	120	▢
FNAHSL	MC-1000-461	25.40	-	7.62	-	25.40	-	Continuous	⊙
FN L	M-118-492	25.40	9.53	-	9.53	-	-	240	✘
FNAHSL	M-125-461	25.40	44.45	-	-	25.40	25.40	180	▢
FNAH L	M-125-490	25.40	44.45	-	-	-	-	180	▲
FNAHSL	M-75-461	25.40	66.68	-	-	25.40	25.40	120	▢
1.0 - 15 ml									
FN L	M-156-492	22.86	25.40	-	-	-	-	180	▲

>>

VIAL / TUBE LABELS

BMP™51/BMP™53 LABEL MAKERS (CONTINUED)

Special Properties	Order Reference	Label Width A (mm)	Label Height B (mm)	Label Length B (m)	Diameter C (mm)	Printable Area Width (mm)	Printable Area Height (mm)	Labels per Cartridge/Roll	Diagram
4.0 - 24.0 ml									
FNAHSL	MC-1250-461	31.75	-	7.62	-	31.75	-	Continuous	⊙
12.0 - 14.0 ml									
FNAHSL	M-119-461	38.10	95.25	-	-	38.10	31.75	80	Ⓛ
12.0 - 24.0 ml									
FN L	M-78-492	25.40	48.26	-	-	-	-	100	▲
FNA	M-132-499	38.10	31.75	-	-	-	-	160	▲



LABXPERT™ LABORATORY LABELLING SYSTEM

Special Properties	Order Reference	Label Width A (mm)	Label Height B (mm)	Label Length B (m)	Diameter C (mm)	Printable Area Width (mm)	Printable Area Height (mm)	Labels per Cartridge/Roll	Diagram
0.5 - 0.7 ml Vial/Tube									
FNA	X-130-499	9.53	20.96	-	-	20.96	9.53	275	▲
FN L	X-130-492	21.00	9.53	-	-	-	-	275	▲
FNAHSL	XSL-123-461	28.58	9.53	-	-	19.05	9.53	500	●
FNAHSL	XSL-122-461	28.58	12.70	-	-	19.05	12.70	500	●
FNAH L	X-112-490	31.75	9.53	-	-	-	-	450	▲
0.5 - 8.0 ml Vial/Tube									
FNAHSL	XSL-72-461	12.70	44.45	-	-	12.70	19.05	225	Ⓛ
FNA	X-118-499	25.40	9.53	-	9.53	-	-	300	⊗
FNA	X-120-499	25.40	12.70	-	9.53	-	-	300	⊗
0.6 - 8.0 ml Vial/Tube									
FN L	XC-500-492	12.70	-	9.10	-	-	-	Continuous	⊙
FNAHSL	XC-500-461	12.70	-	9.10	-	12.70	12.70	Continuous	⊙
1.0 - 2.0 ml Vial/Tube									
FN L	X-117-492	25.40	12.70	-	11.18	25.40	-	300	⊗
1.0 - 8.0 ml Vial/Tube									
FNAH L	X-124-490	12.70	41.91	-	-	-	-	225	▲
FNAHSL	XSL-74-461	12.70	55.88	-	-	12.70	19.05	175	Ⓛ
FNAH L	X-126-490	15.24	45.72	-	-	-	-	225	▲
FNAHSL	XSL-126-461	15.24	45.72	-	-	15.24	25.40	225	Ⓛ
FNAHSL	XSL-86-461	15.24	66.68	-	-	15.24	25.40	150	Ⓛ
FN L	X-156-492	22.86	25.40	-	-	-	-	225	▲
FNA	X-131-499	25.40	12.70	-	-	25.40	12.70	225	▲
FN L	X-131-492	25.40	12.70	-	-	-	-	225	▲
FNAH L	X-125-490	25.40	44.45	-	-	-	-	225	▲
FNAHSL	XSL-125-461	25.40	44.45	-	-	25.40	25.40	225	Ⓛ
FNAHSL	XC-1000-461	25.40	-	9.10	-	25.40	25.40	Continuous	⊙
FN L	X-118-492	25.40	9.53	-	9.53	25.40	-	300	⊗
FNA	X-117-499	25.40	12.70	-	11.18	-	-	300	⊗
FN L	X-120-492	25.40	12.70	-	9.53	25.40	-	300	⊗
FNAHSL	XSL-75-461	25.40	25.40	-	-	25.40	25.40	150	Ⓛ
14.0 - 15.0 ml Conical Tube									
FNAH L	X-113-490	38.10	55.88	-	-	-	-	175	▲
50.0 ml Conical Tube									
FNAH L	X-114-490	38.10	95.25	-	-	-	-	100	▲



Vial and Tube ID

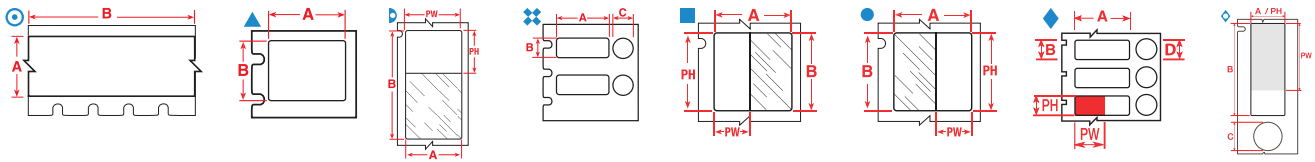
“Brady helps the world’s largest HIV research network develop more efficient, more accurate laboratory labelling protocols.”

Adult Clinical Trials Group

Read the full article on <http://www.bradyeurope.com/labid>



Vial / Tube Labels



TLS2200®/TLS PC LINK™ LABELLING SYSTEM

Special Properties	Order Reference	Label Width A (mm)	Label Height B (mm)	Diameter C (mm)	Printable Area Width (mm)	Printable Area Height (mm)	Labels per Cartridge/Roll	Printer Ribbon	Diagram
0.5 - 0.7 ml Vial/Tube									
FNA	PTL-11-499	12.70	19.05	-	12.70	19.05	500	R-4310	▲
F R	PTL-11-498	12.70	19.05	-	12.70	19.05	500	R-6210	▲
0.5 - 2.0 ml Vial/Tube									
FNAHSL	PTL-74-461	55.88	12.70	-	12.70	12.70	100	R-4310	▢
FN S	PTL-74-427	55.88	12.70	-	19.05	12.70	100	R-4310	▢
0.5 - 8.0 ml Vial/Tube									
FNA	PTL-98-499	25.40	9.53	9.53	25.40	9.53	500	R-4310	✦
1.0 - 8.0 ml Vial/Tube									
FNA	PTL-117-499	22.86	12.70	12.70	22.86	12.70	500	R-4310	✦
FNA	PTL-84-499	22.86	12.70	-	22.86	12.70	500	R-4310	▲
FN S	PTL-75-427	25.40	25.40	-	25.40	25.40	100	R-4310	▢
FNAH L	PTL-76-490	41.28	15.24	-	-	-	250	R-4310	▲
FNAHSL	PTL-76-461	41.28	15.24	-	25.40	15.24	250	R-4310	▢
FNAH L	PTL-78-490	48.26	25.40	-	-	-	250	R-4310	▲
FNAHSL	PTL-86-461	66.68	15.24	-	25.40	15.24	100	R-4310	▢
FNAHSL	PTL-75-461	66.68	25.40	-	25.40	25.40	100	R-4310	▢
FNAHSL	PTL-75-461-YL	66.68	25.40	-	25.40	25.40	100	R-4310	▢
12.0 - 24.0 ml Vial/Tube									
FNA	PTL-29-499	12.70	38.10	-	12.70	38.10	500	R-4310	▲
F R	PTL-29-498	12.70	38.10	-	38.10	12.70	500	R-6210	▲
FNAHSL	PTL-77-461	88.90	38.10	-	38.10	31.75	100	R-4310	▢
FNAHSL	PTL-79-461	95.25	19.05	-	19.05	25.40	100	R-4310	▢

TLS2200 Consumables can be used in the BMP71 printer. Order references beginning with "B" indicate bulk rolls. Any label 25.40 mm or larger in width will be rotated on liner.



BMP™71 PORTABLE LABEL PRINTER

Special Properties	Order Reference	Label Width A (mm)	Label Height B (mm)	Diameter C (mm)	Printable Area Width (mm)	Printable Area Height (mm)	Labels per Cartridge/Roll	Printer Ribbon	Diagram
0.5 - 0.7 ml Vial/Tube									
F R	BM71-11-498	12.70	19.05	-	-	-	5000	M71-R6200	▲
F R	M71-11-498	12.70	19.05	-	-	-	500	M71-R6200	▲
FNA	M71-11-499	12.70	19.50	-	-	-	500	M71-R4300	▲
FNA	M71-84-499	22.86	12.70	-	-	-	500	M71-R4300	▲
FNA	M71-98-499	25.40	9.53	9.53	-	-	500	M71-R4300	✦
FN L	M71-16-492	25.40	9.53	-	-	-	500	M71-R6400	▲
FNAHSL	M71-73-461	45.72	34.93	-	19.05	34.93	250	M71-R6200	▢
1.0 - 2.0 ml Vial/Tube									
FNAHSL	M71-116-461	15.24	41.28	12.70	15.24	30.00	150	M71-R6200	◇
FN L	M71-118-492	25.40	12.70	9.53	-	-	500	M71-R6400	✦
FNAHSL	M71-100-461	38.10	15.24	-	33.00	15.24	500	M71-R6200	▢
FNAHSL	M71-101-461	40.00	15.00	9.53	30.00	15.00	250	M71-R6200	◇
FNAHSL	M71-106-461	44.45	25.40	-	25.40	25.40	250	M71-R6200	▢
1.0 - 8.0 ml Vial/Tube									
FNAHSL	M71-86-461	15.24	66.68	-	15.24	25.40	100	M71-R6200	▢
FNA	M71-126-499	22.86	12.70	12.70	-	-	500	M71-R4300	✦
FNAHSL	BM71-75-461	25.40	25.40	-	25.40	25.40	100	M71-R6200	▢
FNAHSL	M71-115-461	25.40	66.68	-	25.40	25.40	100	M71-R6200	▢
FNAHSL	M71-76-461	41.28	15.24	-	25.40	15.24	500	M71-R6200	▢

BMP™71 PORTABLE LABEL PRINTER (CONTINUED)

Special Properties	Order Reference	Label Width A (mm)	Label Height B (mm)	Diameter C (mm)	Printable Area Width (mm)	Printable Area Height (mm)	Labels per Cartridge/Roll	Printer Ribbon	Diagram
FNAH L	M71-76-490	41.28	15.24	-	-	-	500	M71-R4300	▲
FN L	M71-78-492	48.26	25.40	-	-	-	250	M71-R6400	▲
2.0 - 4.0 Vial/Tube									
FNAHSL	M71-119-461	48.26	15.24	-	40.00	15.24	500	M71-R6200	■
12.0 - 24.0 ml Vial/Tube									
F R	BM71-29-498	12.70	38.10	-	-	-	5000	M71-R6200	▲
12.0 - 24.0 ml Vial/Tube;50.0ml Conical Tube									
FNA	M71-29-499	12.70	38.10	-	-	-	500	M71-R4300	▲
F R	M71-29-498	38.10	12.70	-	-	-	500	M71-R6200	▲

Any label 50.80 mm or larger is rotated on the liner.

Order references beginning with "B" indicate bulk rolls.

Order references with "C" (eg M71C) indicate continuous rolls.

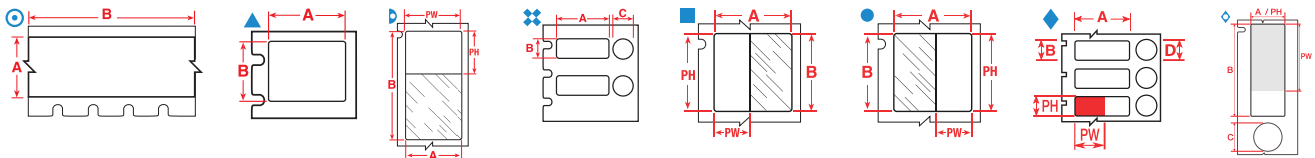


BBP™11 DESKTOP THERMAL TRANSFER PRINTER

Special Properties	Order Reference	Label Width A (mm)	Label Height B (mm)	Diameter C (mm)	Printable Area Width (mm)	Printable Area Height (mm)	Labels per Cartridge/Roll	Labels Per Row	Printer Ribbon	Diagram
0.5 - 0.7 ml Vial/Tube										
FNA	BPT-620-499	12.70	25.40	-	-	-	1000	1	R-4300	▲
FNAHSL	THT-127-461-1.5-SC	12.70	55.90	-	19.05	12.70	1500	1	R-4300	■
FNAHSL	BPT-606-461	25.40	9.53	9.53	20.00	9.53	1000	1	R-4300	◆
FN L	THT-152-492-2.5-SC	25.40	9.53	-	25.40	9.53	2500	2	R-6400	▲
0.5 - 8.0 ml Vial/Tube										
FN L	THT-249-492-1.5-SC	25.40	9.53	9.53	-	-	1500	1	R-6400	◆◆
FNA	THT-249-499-1.5-SC	25.40	9.53	9.53	-	-	1500	1	R-4300	◆◆
FN L	THT-251-492-1.5-SC	25.40	12.70	11.18	-	-	1500	1	R-6400	◆◆
0.6 ml Vial/Tube										
FNA	THT-125-499-1.5-SC	22.90	12.70	-	-	-	1500	1	R-4300	▲
1.0 - 2.0 ml Vial/Tube										
FNAHSL	BPT-612-461	15.24	66.68	-	15.24	25.40	1500	3	R-4300	▷
FNAHSL	BPT-628-461	38.10	15.24	-	33.00	15.24	2500	2	R-4300	■
FNAHSL	BPTLAB-20-461-2.5	40.00	15.00	9.00	30.00	15.00	2500	1	R-4300	◆
FNAHSL	BPTLAB-21-461-2.5	40.00	15.00	-	30.00	15.00	2500	1	R-4300	■
FNAHSL	BPT-608-461	41.28	15.24	12.70	30.00	15.24	1000	1	R-4300	◆
FNA	BPT-608-499	41.28	15.24	12.70	-	-	1000	1	R-4300	◆◆
1.0 - 8.0 ml Vial/Tube										
FN L	THT-88-492-2.5-SC	25.40	19.10	-	-	-	2500	2	R-6400	▲
FNAH L	THT-155-490-1.5-SC	41.28	15.24	-	-	-	1500	1	R-4300	▲
FNAH L	THT-156-490-1.5-SC	48.26	25.40	-	-	-	1500	1	R-4300	▲
FN L	THT-156-492-1.5-SC	48.26	25.40	-	-	-	1500	1	R-6400	▲
FNAHSL	THT-131-461-1.5-SC	66.68	25.40	-	25.40	25.40	1500	1	R-4300	■
1.5 - 2.0 ml Vial/Tube										
FNAHSL	THT-133-461-1.5-SC	15.20	41.30	-	25.40	15.20	1500	1	R-4300	■
FNAHSL	THT-153-461-1.5-SC	15.20	66.70	-	25.40	15.20	1500	1	R-4300	■
FN L	THT-59-492-2.5-SC	25.40	12.70	-	-	-	2500	1	R-6400	▲
2.0 - 4.0 ml Vial/Tube										
FNAHSL	BPT-638-461	48.26	15.24	-	40.00	15.24	2000	1	R-4300	■
4.0 - 8.0 ml Vial/Tube										
FNA	BPT-625-499	25.40	66.68	-	-	-	1500	3	R-4300	▲
4.0 - 50.0 ml Vial/Tube										
FNAHSL	BPT-632-461	45.72	34.93	-	40.00	34.93	2000	1	R-4300	■
12.0 - 24.0 ml Vial/Tube										
FNAH L	THT-157-490-1.5-SC	55.88	38.10	-	-	-	1500	1	R-4300	▲
15.0 - 50.0 ml Vial/Tube										
F R	BPT-611-498	12.70	25.40	-	-	-	3000	3	R-4300	▲
FNA	BPT-611-499	12.70	25.40	-	-	-	3000	3	R-4300	▲
F R	BPT-659-498	25.40	12.40	-	-	-	1000	1	R-4310	▲
FNA	BPT-659-499	25.40	12.40	-	-	-	1000	1	R-4310	▲
FNA	BPT-621-499	25.40	36.50	-	-	-	3000	3	R-4300	▲
50.0 ml Conical Tube										
FN L	THT-179-492-2.5-SC	25.40	25.40	-	25.40	25.40	2500	1	R-6400	▲

F Freezer environment **N** Liquid nitrogen environment **A** Autoclave environment **H** Hot water bath (100°C) **S** Self-laminating label **L** Low-profile (extremely thin) label **R** Removable

Vial / Tube Labels



IP AND BP PR PLUS THERMAL TRANSFER PRINTERS

Special Properties	Order Reference	Label Width A (mm)	Label Height B (mm)	Diameter C (mm)	Printable Area Width (mm)	Printable Area Height (mm)	Labels per Cartridge/ Roll	Labels Per Row	Printer Ribbon		Diagram
0.5 - 0.7 ml Vial/Tube											
FNA	THT-68-499-10	12.70	19.05	-	-	-	10000	4	R-4900	IP™ Enabled	▲
FN L	THT-152-492-3	25.40	9.53	-	-	-	3000	2	R-6400	IP™ Enabled	▲
FNA	THT-152-499-3	25.40	25.40	-	-	-	3000	2	R-4902	IP™ Enabled	▲
FNAHSL	THT-127-461-3	55.88	12.70	-	19.05	12.70	3000	1	R-4302	IP™ Enabled	■
FN S	THT-127-427-3	55.88	12.70	-	19.05	12.70	3000	1	R-4311	IP™ Enabled	■
0.6 - 8.0 ml Vial/Tube											
FNA	THT-125-499-3	12.70	22.86	-	-	-	3000	1	R-4900	IP™ Enabled	▲
1.0 - 2.0 ml Vial/Tube											
FNAHSL	THT-183-461-1	25.40	44.45	-	25.40	25.40	1000	1	R-4300	-	■
FNA L	THT-163-499-3	25.40	9.53	9.53	25.40	-	3000	1	R-4900	IP™ Enabled	◆
FN L	THT-163-492-3	25.40	9.53	9.53	25.40	9.53	3000	1	R-6400	IP™ Enabled	◆
FN L	THT-181-492-3	25.40	12.70	9.53	25.40	12.70	3000	1	R-6400	IP™ Enabled	◆
FNAHSL	THT-182-492-3	25.40	12.70	11.18	25.40	12.70	3000	1	R-6400	IP™ Enabled	◆
1.0 - 8.0 ml Vial/Tube											
FNA	THT-126-499-3	22.86	12.70	12.70	22.86	-	3000	1	R-4902	IP™ Enabled	◆
FN L	THT-88-492-5	25.40	19.10	-	-	-	5000	2	R-6400	IP™ Enabled	▲
FNAH L	THT-155-490-3	41.28	15.24	-	-	-	3000	1	R-4302	IP™ Enabled	▲
FNAHSL	THT-133-461-3	41.28	15.24	-	25.40	15.24	3000	1	R-4302	IP™ Enabled	■
FNAH L	THT-156-490-3	48.26	25.40	-	-	-	3000	1	R-4302	IP™ Enabled	▲
FN L	THT-156-492-3	48.26	25.40	-	-	-	3000	1	R-6400	IP™ Enabled	▲
FNAHSL	THT-153-461-3	66.68	15.24	-	25.40	15.24	3000	1	R-4302	IP™ Enabled	■
FNAHSL	THT-131-461-3	66.68	25.40	-	25.40	25.40	3000	1	R-4300	IP™ Enabled	■
FN S	THT-131-427-3	66.68	25.40	-	25.40	25.40	3000	1	R-4300	IP™ Enabled	■
1.5 - 2.0 ml Vial/Tube											
FN L	THT-59-492-10	25.40	12.70	-	25.40	12.70	10000	1	R-6400	IP™ Enabled	▲
12.0 - 50.0 ml Vial/Tube											
FNAHSL	THT-139-461-2	133.35	25.40	-	25.40	38.10	2000	2	R-4306	IP™ Enabled	◐
14.0 - 15.0 ml Conical Tube											
FNAH L	THT-157-490-3	55.88	38.10	-	55.88	38.10	3000	1	R-4300	IP™ Enabled	▲
14.0 - 24.0 ml Conical Tube											
FNAHSL	THT-134-461-3	88.90	38.10	-	31.75	38.10	3000	1	R-4307	IP™ Enabled	■
50.0 ml Conical Tube											
FN L	THT-180-492-3	22.86	25.40	-	22.86	25.40	3000	1	R-6400	IP™ Enabled	▲
FN L	THT-179-492-3	25.40	25.40	-	25.40	25.40	3000	1	R-6400	IP™ Enabled	▲

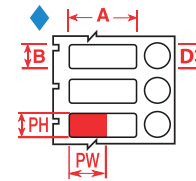
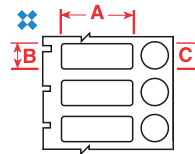
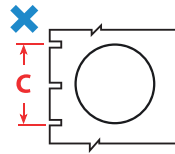
IP™ Enabled - The printer automatically recognises these parts, and displays correct material & ribbon and automatically calibrates.
For IP enabled ribbons, please prefix part with IP e.g IP-R6000.



- F** Freezer environment
- N** Liquid nitrogen environment
- A** Autoclave environment
- H** Hot water bath (100°C)
- S** Self-laminating label
- L** Low-profile (extremely thin) label
- R** Removable



Save time by using the Vial and Vial Top combination labels - print your information in one go.



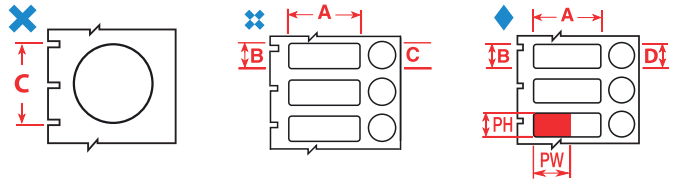
LABXPERT™ LABORATORY LABELLING SYSTEM

Special Properties	Order Reference	Label Width A (mm)	Label Height B (mm)	Diameter C (mm)	Labels per Cartridge/ Roll	Diagram
0.5 - 8.0 ml Vial/Tube						
FNA	X-118-499	25.40	9.53	9.53	300	❖❖
FNA	X-120-499	25.40	12.70	9.53	300	❖❖
0.6 - 1.5 ml Vial/Tube						
FNA	X-82-499-OR-BK	-	-	9.53	300	✕
FNA	X-82-499-RD-BK	-	-	9.53	300	✕
FNA	X-82-499-YL-BK	-	-	9.53	300	✕
FN L	X-82-492	-	-	9.53	300	✕
FNA	X-82-499	-	-	9.53	300	✕
1.0 - 2.0 ml Vial/Tube						
FNA	X-83-499-OR-BK	-	-	12.70	300	✕
FNA	X-83-499-RD-BK	-	-	12.70	300	✕
FNA	X-83-499-YL-BK	-	-	12.70	300	✕
FN L	X-83-492	-	-	12.70	300	✕
FNA	X-83-499	-	-	12.70	300	✕
FN L	X-117-492	25.40	12.70	11.18	300	❖❖
1.0 - 8.0 ml Vial/Tube						
FN L	X-118-492	25.40	9.53	9.53	300	❖❖
FNA	X-117-499	25.40	12.70	11.18	300	❖❖
FN L	X-120-492	25.40	12.70	9.53	300	❖❖



BMP™51/BMP™51 LABEL MAKERS

Special Properties	Order Reference	Label Width A (mm)	Label Height B (mm)	Diameter C (mm)	Labels per Cartridge/ Roll	Diagram
0.5 - 1.5 ml						
FN L	M-82-492	-	-	9.53	240	✕
FNA	M-82-499-OR-BK	-	-	9.53	240	✕
FNA	M-82-499	-	-	9.53	240	✕
FNA	M-82-499-YL-BK	-	-	9.53	240	✕
1.0 - 2.0 ml						
FNA	M-118-499	25.40	9.53	9.53	240	❖❖
1.0 - 8.0 ml						
FN L	M-118-492	25.40	9.53	9.53	240	❖❖
1.5 - 2.0 ml						
FNA	M-83-499	-	-	12.70	240	✕
FNA	M-83-499-YL-BK	-	-	12.70	240	✕
FNA	M-117-499	25.40	12.70	11.18	240	❖❖
FNA	M-120-499	25.40	12.70	9.53	240	❖❖



BMP™71 PORTABLE LABEL PRINTER

Special Properties	Order Reference	Label Width A (mm)	Label Height B (mm)	Diameter C (mm)	Printable Area Width (mm)	Printable Area Height (mm)	Labels per Cartridge/Roll	Diagram
0.5 - 0.7 ml Vial/Tube								
FNA	M71-98-499	25.40	9.53	9.53	-	-	500	❖
0.6 - 1.5 ml Vial/Tube								
FNA	M71-82-499	-	-	9.53	-	-	500	✕
1.0 - 2.0 ml Vial/Tube								
FNA	M71-83-499	-	-	12.70	-	-	250	✕
FNAHSL	M71-116-461	15.24	41.28	12.70	15.24	30.00	150	◇
FNAHSL	M71-101-461	40.00	15.00	9.53	30.00	15.00	250	◇
1.0 - 8.0 ml Vial/Tube								
FNA	M71-126-499	22.86	12.70	12.70	-	-	500	❖

Any label 50.80 mm or larger is rotated on the liner. Order references beginning with "B" indicate bulk rolls. Order references with "C" (eg M71C) indicate continuous rolls.



TLS2200®/TLS PC LINK™ LABELLING SYSTEM

Special Properties	Order Reference	Label Width A (mm)	Label Height B (mm)	Diameter C (mm)	Printable Area Width (mm)	Printable Area Height (mm)	Labels per Cartridge/Roll	Labels Per Row	Printer Ribbon	Diagram
0.5 - 8.0 ml Vial/Tube										
FNA	PTL-98-499	25.40	9.53	9.53	25.40	9.53	500	1	R-4310	❖
0.6 - 1.5 ml Vial/Tube										
FNA	PTL-82-499-YL	-	-	9.53	-	-	500	1	R-4310	✕
FNA	PTL-82-499	-	-	9.53	-	-	500	1	R-4310	✕
1.0 - 2.0 ml Vial/Tube										
FNA	PTL-83-499-YL	-	-	12.70	-	-	500	1	R-4310	✕
FNA	PTL-83-499	-	-	12.70	-	-	500	1	R-4310	✕
1.0 - 8.0 ml Vial/Tube										
FNA	PTL-117-499	22.86	12.70	12.70	22.86	12.70	500	1	R-4310	❖

TLS2200 Consumables can be used in the BMP71 printer. Any label 50.80 mm or larger is rotated on the liner. Order references beginning with "B" indicate bulk rolls.

- F** Freezer environment
- N** Liquid nitrogen environment
- A** Autoclave environment
- H** Hot water bath (100°C)
- S** Self-laminating label
- L** Low-profile (extremely thin) label
- R** Removable



Go watch our videos on <http://www.bradyeurope.com/labid>



BBP™11 DESKTOP THERMAL TRANSFER PRINTER

Special Properties	Order Reference	Label Width A (mm)	Label Height B (mm)	Diameter C (mm)	Printable Area Width (mm)	Printable Area Height (mm)	Labels per Cartridge/Roll	Labels Per Row	Printer Ribbon	Diagram
0.5 - 0.7 ml Vial/Tube										
FNAHSL	BPT-606-461	25.40	9.53	9.53	20.00	9.53	1000	1	R-4300	◆
0.6 - 1.5 ml Vial/Tube										
FN L	THT-143-492-1.5-SC	-	-	9.53	-	-	1500	3	R-6400	✕
0.6 - 50.0 ml Vial/Tube										
FNAHSL	BPT-602-461AW	-	-	9.53	-	-	3000	3	R-4300	✕
FNA	BPT-602-499	-	-	9.53	-	-	3000	3	R-4300	✕
FNA	BPT-602-499YL	-	-	9.53	-	-	3000	3	R-4300	✕
FNA	BPT-603-499	-	-	12.70	-	-	3000	3	R-4300	✕
FNA	BPT-603-499YL	-	-	12.70	-	-	3000	3	R-4300	✕
FNAHSL	BPT-604-461AW	-	-	15.24	-	-	3000	3	R-4300	✕
1.0 - 2.0 ml Vial/Tube										
FNA	THT-144-499-1.5-SC	-	-	12.70	-	-	1500	3	R-4300	✕
FN L	THT-144-492-1.5-SC	12.70	-	12.70	-	-	1500	3	R-6400	✕
FNAHSL	BPTLAB-20-461-2.5	40.00	15.00	9.00	30.00	15.00	2500	1	R-4300	◆
FNAHSL	BPT-608-461	41.28	15.24	12.70	30.00	15.24	1000	1	R-4300	◆
FNA	BPT-608-499	41.28	15.24	12.70	-	-	1000	1	R-4300	✕



IP AND BP PR PLUS THERMAL TRANSFER PRINTERS

Special Properties	Order Reference	Label Width A (mm)	Label Height B (mm)	Diameter C (mm)	Printable Area Width (mm)	Printable Area Height (mm)	Labels per Cartridge/Roll	Labels Per Row	Printer Ribbon	Diagram
0.6 - 1.5 ml Vial/Tube										
FNA	THT-143-499-3	-	-	9.53	-	-	3000	4	R-4900	IP™ Enabled ✕
FN L	THT-143-492-3	-	-	9.53	-	-	3000	3	R-6400	IP™ Enabled ✕
1.0 - 2.0 ml Vial/Tube										
FNA	THT-144-499-3	-	-	12.70	-	-	3000	3	R-4900	IP™ Enabled ✕
FN L	THT-144-492-3	-	-	12.70	-	-	3000	3	R-6400	IP™ Enabled ✕
FNA	THT-163-499-3	25.40	9.53	9.53	25.40	-	3000	1	R-4900	IP™ Enabled ✕
FN L	THT-163-492-3	25.40	9.53	9.53	25.40	9.53	3000	1	R-6400	IP™ Enabled ✕
FN L	THT-181-492-3	25.40	12.70	9.53	25.40	12.70	3000	1	R-6400	IP™ Enabled ✕
FN L	THT-182-492-3	25.40	12.70	11.18	25.40	12.70	3000	1	R-6400	IP™ Enabled ✕
1.0 - 8.0 ml Vial/Tube										
FNA	THT-126-499-3	22.86	12.70	12.70	22.86	-	3000	1	R-4902	IP™ Enabled ✕

IP™ Enabled - The printer automatically recognises these parts, and displays correct material & ribbon and automatically calibrates.
For IP enabled ribbons, please prefix part with IP e.g IP-R6000.



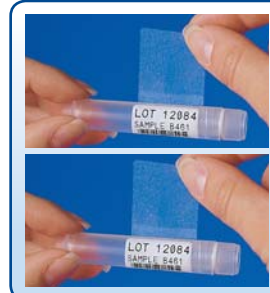
To find out how Brady helps some of the world's leading research laboratories develop more efficient labelling protocols visit <http://www.bradyeurope.com/labid>



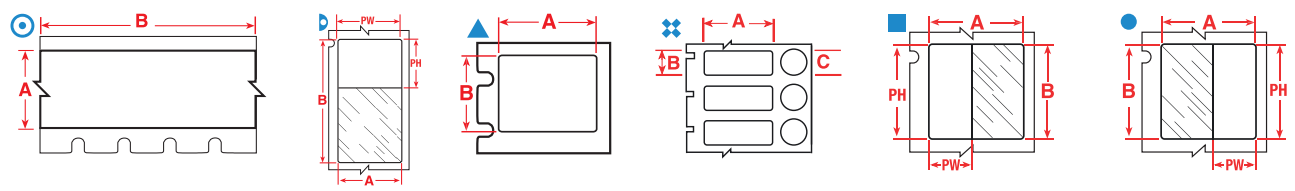
Centrifuge / Eppendorf / PCR Tube Labels



- F** Freezer environment
- N** Liquid nitrogen environment
- A** Autoclave environment
- H** Hot water bath (100°C)
- S** Self-laminating label
- L** Low-profile (extremely thin) label
- R** Removable



For best adhesion, we recommend that you do not touch the adhesive side of the label when wrapping it around your vial or tube



CENTRIFUGE / EPPENDORF / PCR TUBE LABELS



BMP™21 HAND-HELD LABEL PRINTER

Special Properties	Order Reference	Label Width A (mm)	Label Length B (m)	Labels per Cartridge/Roll	Diagram
0.6 ml Vial/Tube					
FNA	M21-375-499	9.53	4.80	Continuous	⊙
FNAHSL	M21-375-461	9.53	6.40	Continuous	⊙
1.5 ml Vial/Tube					
FNA	M21-500-499	12.70	4.80	Continuous	⊙
FNAHSL	M21-500-461	12.70	6.40	Continuous	⊙
2.0 - 50.0 ml Vial/Tube					
FNA	M21-750-499	19.05	4.80	Continuous	⊙
FNAHSL	M21-750-461	19.05	6.40	Continuous	⊙



BMP™51/BMP™53 LABEL MAKERS

Special Properties	Order Reference	Label Width A (mm)	Label Height B (mm)	Label Length B (m)	Diameter C (mm)	Printable Area Width (mm)	Printable Area Height (mm)	Labels per Cartridge/Roll	Diagram
0.6 - 2.0 ml									
FNAHSL	MC-500-461	12.70	-	7.62	-	12.70	-	Continuous	⊙
0.6 ml									
FNAHSL	MC-375-461	9.53	-	7.62	-	9.53	-	Continuous	⊙
FN L	M-130-492	9.53	20.96	-	-	-	-	220	▲
FN	M-130-499	9.53	20.96	-	-	-	-	220	▲
FNA	M-72-461	12.70	44.45	-	-	12.70	19.05	180	▷
FNAHSL	M-123-461	28.58	9.53	-	-	19.05	9.53	360	■
FNAHSL	M-122-461	28.58	12.70	-	-	19.05	12.70	360	■
FNAH L	M-112-490	31.75	9.53	-	-	-	-	360	▲
1.0 - 2.0 ml									
FNA	M-118-499	25.40	9.53	-	9.53	-	-	240	❖

>>

BMP™51/BMP™53 LABEL MAKERS (CONTINUED)

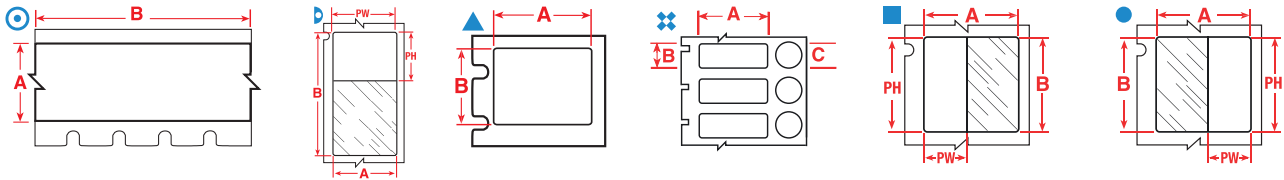
Special Properties	Order Reference	Label Width A (mm)	Label Height B (mm)	Label Length B (m)	Diameter C (mm)	Printable Area Width (mm)	Printable Area Height (mm)	Labels per Cartridge/Roll	Diagram
1.0 - 8.0 ml									
FN L	M-131-492	12.70	25.40	-	-	-	-	180	▲
FNA	M-131-499	12.70	25.40	-	-	-	-	180	▲
FNAHSL	M-74-461	12.70	55.88	-	-	12.70	19.05	140	▯
FNAHSL	M-126-461	15.24	45.72	-	-	15.24	25.40	180	▯
FNAH L	M-126-490	15.24	45.72	-	-	-	-	180	▲
FNAHSL	M-86-461	15.24	66.68	-	-	15.24	25.40	120	▯
FN L	M-118-492	25.40	9.53	-	9.53	-	-	240	⊗
1.5 - 2.0 ml									
FNAHSL	M-124-461	12.70	41.91	-	-	12.70	19.05	180	▯
FNAH L	M-124-490	12.70	41.91	-	-	-	-	180	▲
FN L	M-120-492	25.40	12.70	-	9.53	-	-	240	⊗
FN L	M-117-492	25.40	12.70	-	11.18	-	-	240	⊗
FNA	M-117-499	25.40	12.70	-	11.18	-	-	240	⊗
FNA	M-120-499	25.40	12.70	-	9.53	-	-	240	⊗



LABXPERT™ LABORATORY LABELLING SYSTEM

Special Properties	Order Reference	Label Width A (mm)	Label Height B (mm)	Label Length B (m)	Diameter C (mm)	Printable Area Width (mm)	Printable Area Height (mm)	Labels per Cartridge/Roll	Diagram
0.2 ml PCR Tube									
FNAHSL	XSL-108-461	4.75	38.10	-	-	4.75	17.78	500	▯
0.5 - 0.7 ml Vial/Tube									
FNAHSL	XC-375-461	9.53	-	9.10	-	-	-	Continuous	⊙
FNAHSL	X-130-499	9.53	20.96	-	-	20.96	9.53	275	▲
FNAHSL	X-130-492	21.00	9.53	-	-	-	-	275	▲
FNAHSL	XSL-123-461	28.58	9.53	-	-	19.05	9.53	500	●
FNAHSL	XSL-122-461	28.58	12.70	-	-	19.05	12.70	500	●
FNAH L	X-112-490	31.75	9.53	-	-	-	-	450	▲
0.5 - 8.0 ml Vial/Tube									
FNAHSL	XSL-72-461	12.70	44.45	-	-	12.70	19.05	225	▯
FNA	X-118-499	25.40	9.53	-	9.53	-	-	300	⊗
FNA	X-120-499	25.40	12.70	-	9.53	-	-	300	⊗
0.6 - 8.0 ml Vial/Tube									
FN L	XC-500-492	12.70	-	9.10	-	-	-	Continuous	⊙
FNAHSL	XC-500-461	12.70	-	9.10	-	12.70	12.70	Continuous	⊙
1.0 - 2.0 ml Vial/Tube									
FN L	X-117-492	25.40	12.70	-	11.18	25.40	-	300	⊗
1.0 - 8.0 ml Vial/Tube									
FNAH L	X-124-490	12.70	41.91	-	-	-	-	225	▲
FNAHSL	XSL-74-461	12.70	55.88	-	-	12.70	19.05	175	▯
FNAHSL	XSL-124-461	14.91	12.70	-	-	12.70	19.05	225	▯
FNAHSL	XSL-126-461	15.24	45.72	-	-	15.24	25.40	225	▯
FNAHSL	XSL-86-461	15.24	66.68	-	-	15.24	25.40	150	▯
FNA L	X-156-492	22.86	25.40	-	-	-	-	225	▲
FNA L	X-131-499	25.40	12.70	-	-	25.40	12.70	225	▲
FN L	X-131-492	25.40	12.70	-	-	-	-	225	▲
FN L	X-118-492	25.40	9.53	-	9.53	25.40	-	300	⊗
FNA	X-117-499	25.40	12.70	-	11.18	-	-	300	⊗
FN L	X-120-492	25.40	12.70	-	9.53	25.40	-	300	⊗
14.0 - 15.0 ml Conical Tube									
FNAH L	X-113-490	38.10	55.88	-	-	-	-	175	▲
50.0 ml Conical Tube									
FNAH L	X-114-490	38.10	95.25	-	-	-	-	100	▲

Centrifuge / Eppendorf / PCR Tube Labels



BMP™71 PORTABLE LABEL PRINTER

Special Properties	Order Reference	Label Width A (mm)	Label Height B (mm)	Diameter C (mm)	Printable Area Width (mm)	Printable Area Height (mm)	Labels per Cartridge/Roll	Printer Ribbon	Diagram
0.5 - 0.7 ml Vial/Tube									
FNA	M71-16-499	9.53	25.40	-	-	-	500	M71-R4300	▲
F R	M71-16-498	9.53	25.40	-	-	-	500	M71-R6200	▲
F R	BM71-11-498	12.70	19.05	-	-	-	5000	M71-R6200	▲
F R	M71-11-498	12.70	19.05	-	-	-	500	M71-R6200	▲
FNA	M71-11-499	12.70	19.50	-	-	-	500	M71-R4300	▲
FNA	M71-84-499	22.86	12.70	-	-	-	500	M71-R4300	▲
FNA	M71-98-499	25.40	9.53	9.53	-	-	500	M71-R4300	✘
FN L	M71-16-492	25.40	9.53	-	-	-	500	M71-R6400	▲
FNAHSL	M71-73-461	45.72	34.93	-	19.05	34.93	250	M71-R6200	■
1.0 - 8.0 ml Vial/Tube									
FNAHSL	M71-86-461	15.24	66.68	-	15.24	25.40	100	M71-R6200	▤
FNA	M71-126-499	22.86	12.70	12.70	-	-	500	M71-R4300	✘
FNAHSL	M71-76-461	41.28	15.24	-	25.40	15.24	500	M71-R6200	■
FNAH L	M71-76-490	41.28	15.24	-	-	-	500	M71-R4300	▲

Any label 50.80 mm or larger is rotated on the liner. Order references beginning with "B" indicate bulk rolls. Order references with "C" (eg M71C) indicate continuous rolls.



TLS2200®/TLS PC LINK™ LABELLING SYSTEM

Special Properties	Order Reference	Label Width A (mm)	Label Height B (mm)	Diameter C (mm)	Printable Area Width (mm)	Printable Area Height (mm)	Labels per Cartridge/Roll	Labels Per Row	Printer Ribbon	Diagram
0.2 ml PCR Tube										
FNAHSL	PTL-108-461	38.10	4.75	-	17.78	4.75	750	1	R-4310	■
0.5 - 0.7 ml Vial/Tube										
FNA	PTL-16-499	9.53	25.40	-	9.53	25.40	500	1	R-4310	▲
F R	PTL-16-498	9.53	25.40	-	9.53	25.40	500	1	R-6210	▲
FNA	PTL-11-499	12.70	19.05	-	12.70	19.05	500	1	R-4310	▲
F R	PTL-11-498	12.70	19.05	-	12.70	19.05	500	1	R-6210	▲
FNAH L	PTL-112-490	31.75	9.53	-	-	-	500	1	R-4310	▲
FNAHSL	PTL-73-461	45.72	9.53	-	19.05	9.53	500	1	R-4310	▤
FNAHSL	PTL-72-461	45.72	12.70	-	19.05	12.70	500	1	R-4310	▤
0.5 - 2.0 ml Vial/Tube										
FNAHSL	PTL-74-461	55.88	12.70	-	12.70	12.70	100	1	R-4310	▤
FN S	PTL-74-427	55.88	12.70	-	19.05	12.70	100	1	R-4310	▤
0.5 - 8.0 ml Vial/Tube										
FNA	PTL-98-499	25.40	9.53	9.53	25.40	9.53	500	1	R-4310	✘
1.0 - 8.0 ml Vial/Tube										
FNAHSL	PTL-84-499	22.86	12.70	-	22.86	12.70	500	1	R-4310	▲
FNAH L	PTL-76-490	41.28	15.24	-	-	-	250	1	R-4310	▲
FNAHSL	PTL-76-461	41.28	15.24	-	25.40	15.24	250	1	R-4310	■
FNAHSL	PTL-86-461	66.68	15.24	-	25.40	15.24	100	1	R-4310	▤

TLS2200 Consumables can be used in the BMP71 printer. Any label 50.80 mm or larger is rotated on the liner. Order references beginning with "B" indicate bulk rolls.

F Freezer environment **N** Liquid nitrogen environment **A** Autoclave environment **H** Hot water bath (100°C) **S** Self-laminating label **L** Low-profile (extremely thin) label **R** Removable

CENTRIFUGE / EPPENDORF / PCR TUBE LABELS



BBP™11 DESKTOP THERMAL TRANSFER PRINTER

Special Properties	Order Reference	Label Width A (mm)	Label Height B (mm)	Diameter C (mm)	Printable Area Width (mm)	Printable Area Height (mm)	Labels per Cartridge/ Roll	Labels Per Row	Printer Ribbon	Diagram
0.5 - 0.7 ml Vial/Tube										
FNAHSL	BPT-614-461	22.86	5.08	-	18.00	5.08	2000	1	R-4300	■
FNA	THT-152-499-1.5-SC	25.40	9.50	-	-	-	1500	2	R-4300	▲
FN L	THT-152-492-2.5-SC	25.40	9.53	-	-	-	2500	2	R-6400	▲
FNAHSL	BPT-627-461	27.94	6.35	-	22.00	6.35	1000	1	R-4300	■
FNAH L	THT-154-490-1.5-SC	31.75	9.53	-	-	-	1500	1	R-4300	▲
FNAHSL	THT-123-461-1.5-SC	45.72	9.53	-	19.05	9.53	1500	1	R-4300	■
FNAHSL	THT-122-461-1.5-SC	45.72	45.70	-	19.05	12.70	1500	1	R-4300	■
FNAHSL	THT-127-461-1.5-SC	55.88	55.90	-	19.05	12.70	1500	1	R-4300	■
1.0 - 8.0 ml Vial/Tube										
FNAH L	THT-155-490-1.5-SC	41.28	15.24	-	-	-	1500	1	R-4300	▲
1.5 - 2.0 ml Vial/Tube										
FN L	THT-59-492-2.5-SC	25.40	12.70	-	-	-	2500	1	R-6400	▲
FNAHSL	THT-133-461-1.5-SC	41.30	41.30	-	25.40	15.20	1500	1	R-4300	■
FNAHSL	THT-153-461-1.5-SC	66.70	66.70	-	25.40	15.20	1500	1	R-4300	■



IP AND BP PR PLUS THERMAL TRANSFER PRINTERS

Special Properties	Order Reference	Label Width A (mm)	Label Height B (mm)	Diameter C (mm)	Printable Area Width (mm)	Printable Area Height (mm)	Labels per Cartridge/ Roll	Labels Per Row	Printer Ribbon	Diagram
0.5 - 0.7 ml Tube										
FNAH L	THT-154-490-3	31.75	9.53	-	-	-	3000	1	R-4306	IP™ Enabled ▲
0.5 - 0.7 ml Vial/Tube										
FNA	THT-68-499-10	12.70	19.05	-	-	-	10000	4	R-4900	IP™ Enabled ▲
FN L	THT-152-492-3	25.40	9.53	-	-	-	3000	2	R-6400	IP™ Enabled ▲
FNA	THT-152-499-3	25.40	25.40	-	-	-	3000	2	R-4902	IP™ Enabled ▲
FNAHSL	THT-123-461-3	45.72	9.53	-	19.05	9.53	3000	1	R-4302	IP™ Enabled ■
FNAHSL	THT-122-461-3	45.72	12.70	-	19.05	12.70	3000	1	R-4302	IP™ Enabled ■
FNAHSL	THT-127-461-3	55.88	12.70	-	19.05	12.70	3000	1	R-4302	IP™ Enabled ■
FN S	THT-127-427-3	55.88	12.70	-	19.05	12.70	3000	1	R-4311	IP™ Enabled ■
1.0 - 8.0 ml Vial/Tube										
FNA	THT-126-499-3	22.86	12.70	12.70	22.86	-	3000	1	R-4902	IP™ Enabled ❖
FNAH L	THT-155-490-3	41.28	15.24	-	-	-	3000	1	R-4302	IP™ Enabled ▲
FNAHSL	THT-133-461-3	41.28	15.24	-	25.40	15.24	3000	1	R-4302	IP™ Enabled ■
FNAHSL	THT-153-461-3	66.68	15.24	-	25.40	15.24	3000	1	R-4302	IP™ Enabled ■
1.5 - 2.0 ml Vial/Tube										
FN L	THT-59-492-10	25.40	12.70	-	25.40	12.70	10000	1	R-6400	IP™ Enabled ▲



B-492 (FreezerBondz™)

“The new B-492 labels and the software have transformed our sample labelling. The ease of creating an excel sheet with more information than you could write on a label have ensured we have clear easy to read labels. Everyone in the laboratory finds it easy to use.”

Institute of Cancer Research UK

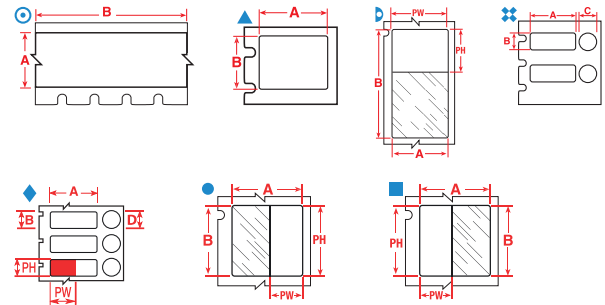
Read the full article on <http://www.bradyeurope.com/labid>



Conical / Large Tube Labels



- F** Freezer environment
- N** Liquid nitrogen environment
- A** Autoclave environment
- H** Hot water bath (100°C)
- S** Self-laminating label
- L** Low-profile (extremely thin) label
- R** Removable



BMP™21 HAND-HELD LABEL PRINTER

Special Properties	Order Reference	Label Width A (mm)	Label Length B (m)	Labels per Cartridge/Roll	Diagram
0.6 ml Vial/Tube					
FNA	M21-375-499	9.53	4.80	Continuous	⊙
FNAHSL	M21-375-461	9.53	6.40	Continuous	⊙
1.5 ml Vial/Tube					
FNA	M21-500-499	12.70	4.80	Continuous	⊙
FNAHSL	M21-500-461	12.70	6.40	Continuous	⊙
2.0 - 50.0 ml Vial/Tube					
FNA	M21-750-499	19.05	4.80	Continuous	⊙
FNAHSL	M21-750-461	19.05	6.40	Continuous	⊙



BMP™51/BMP™53 LABEL MAKERS

Special Properties	Order Reference	Label Width A (mm)	Label Height B (mm)	Label Length B (m)	Printable Area Width (mm)	Printable Area Height (mm)	Labels per Cartridge/Roll	Diagram
1.0 - 8.0 ml								
FNAHSL	MC-1000-461	25.40	-	7.62	25.40	-	Continuous	⊙
1.0 - 15 ml								
FN L	M-156-492	22.86	25.40	-	-	-	180	▲
4.0 - 24.0 ml								
FNAHSL	MC-1250-461	31.75	-	7.62	31.75	-	Continuous	⊙
12.0 - 14.0 ml								
FNAHSL	M-119-461	38.10	95.25	-	38.10	31.75	80	Ⓛ
12.0 - 24.0 ml								
FN L	M-78-492	25.40	48.26	-	-	-	100	▲
FNA	M-132-499	38.10	31.75	-	-	-	160	▲
14 - 15 ml								
FNAH L	M-113-490	38.10	55.88	-	-	-	140	▲
FNAHSL	M-129-461	38.10	57.15	-	38.10	31.75	140	Ⓛ
50 ml								
FNA	M-78-499	25.40	25.40	-	-	-	100	▲
FNAH L	M-114-490	38.10	98.42	-	-	-	80	▲



LABXPRT™ LABORATORY LABELLING SYSTEM

Special Properties	Order Reference	Label Width A (mm)	Label Height B (mm)	Label Length B (m)	Diameter C (mm)	Printable Area Width (mm)	Printable Area Height (mm)	Labels per Cartridge/ Roll	Diagram
0.5 - 0.7 ml Vial/Tube									
FNA	X-130-499	9.53	20.96	-	-	20.96	9.53	275	▲
FN L	X-130-492	21.00	9.53	-	-	-	-	275	▲
FNAHSL	XSL-123-461	28.58	9.53	-	-	19.05	9.53	500	●
FNAHSL	XSL-122-461	28.58	12.70	-	-	19.05	12.70	500	●

>>

LABXPERT™ LABORATORY LABELLING SYSTEM (CONTINUED)

Special Properties	Order Reference	Label Width A (mm)	Label Height B (mm)	Label Length B (m)	Diameter C (mm)	Printable Area Width (mm)	Printable Area Height (mm)	Labels per Cartridge/ Roll	Diagram
FNAH L	X-112-490	31.75	9.53	-	-	-	-	450	▲
0.5 - 8.0 ml Vial/Tube									
FNAHSL	XSL-72-461	12.70	44.45	-	-	12.70	19.05	225	▤
FNA	X-78-499	25.40	48.26	-	-	22.86	12.70	125	▲
FNA	X-118-499	25.40	9.53	-	9.53	-	-	300	⊗
FNA	X-120-499	25.40	12.70	-	9.53	-	-	300	⊗
0.6 - 8.0 ml Vial/Tube									
FN L	XC-500-492	12.70	-	9.10	-	-	-	Continuous	⊙
FNAHSL	XC-500-461	12.70	-	9.10	-	12.70	12.70	Continuous	⊙
1.0 - 2.0 ml Vial/Tube									
FN L	X-117-492	25.40	12.70	-	11.18	25.40	-	300	⊗
1.0 - 8.0 ml Vial/Tube									
FNAH L	X-124-490	12.70	41.91	-	-	-	-	225	▲
FNAHSL	XSL-74-461	12.70	55.88	-	-	12.70	19.05	175	▤
FNAH L	X-126-490	15.24	45.72	-	-	-	-	225	▲
FNAHSL	XSL-126-461	15.24	45.72	-	-	15.24	25.40	225	▤
FNAHSL	XSL-86-461	15.24	66.68	-	-	15.24	25.40	150	▤
FN L	X-156-492	22.86	25.40	-	-	-	-	225	▲
FNA	X-131-499	25.40	12.70	-	-	25.40	12.70	225	▲
FN L	X-131-492	25.40	12.70	-	-	-	-	225	▲
FNAH L	X-125-490	25.40	44.45	-	-	-	-	225	▲
FNAHSL	XSL-125-461	25.40	44.45	-	-	25.40	25.40	225	▤
FNAHSL	XC-1000-461	25.40	-	9.10	-	25.40	25.40	Continuous	⊙
FN L	X-118-492	25.40	9.53	-	9.53	25.40	-	300	⊗
FNA	X-117-499	25.40	12.70	-	11.18	-	-	300	⊗
FN L	X-120-492	25.40	12.70	-	9.53	25.40	-	300	⊗
FNAHSL	XSL-75-461	25.40	25.40	-	-	25.40	25.40	150	▤
12 - 24 ml Vial/Tube									
FN L	X-78-492	48.26	25.40	-	-	48.26	25.40	125	▲
14.0 - 15.0 ml Conical Tube									
FNA	X-132-499	31.75	38.10	-	-	-	-	200	▲
FNAH L	X-113-490	38.10	55.88	-	-	-	-	175	▲
FNAHSL	XSL-119-461	38.10	95.25	-	-	38.10	31.75	100	▤
14.0 - 50.0 ml Conical Tube									
FNAHSL	XC-1250-461	31.75	-	9.10	-	31.75	31.75	Continuous	⊙
FNAHSL	XSL-129-461	38.10	57.15	-	-	38.10	31.75	175	▤
50.0 ml Conical Tube									
FNAH L	X-114-490	38.10	95.25	-	-	-	-	100	▲

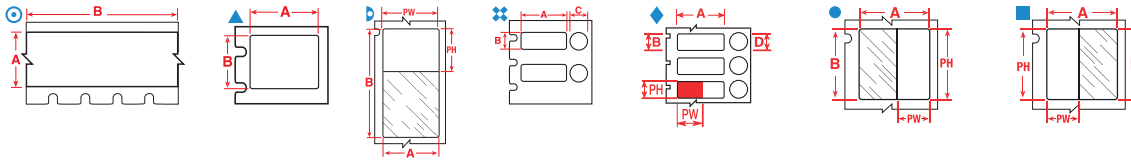


BMP™71 PORTABLE LABEL PRINTER

Special Properties	Order Reference	Label Width A (mm)	Label Height B (mm)	Diameter C (mm)	Printable Area Width (mm)	Printable Area Height (mm)	Labels per Cartridge/ Roll	Printer Ribbon	Diagram
0.5 - 0.7 ml Vial/Tube									
FNA	M71-11-499	12.70	19.50	-	-	-	500	M71-R4300	▲
FNA	M71-84-499	22.86	12.70	-	-	-	500	M71-R4300	▲
FNA	M71-98-499	25.40	9.53	9.53	-	-	500	M71-R4300	⊗
FN L	M71-16-492	25.40	9.53	-	-	-	500	M71-R6400	▲
1.0 - 2.0 ml Vial/Tube									
FNAHSL	M71-116-461	15.24	41.28	12.70	15.24	30.00	150	M71-R6200	◊
FN L	M71-118-492	25.40	12.70	9.53	-	-	500	M71-R6400	⊗
FNAHSL	M71-100-461	38.10	15.24	-	33.00	15.24	500	M71-R6200	■
FNAHSL	M71-101-461	40.00	15.00	9.53	30.00	15.00	250	M71-R6200	◆
1.0 - 8.0 ml Vial/Tube									
FNAHSL	M71-86-461	15.24	66.68	-	15.24	25.40	100	M71-R6200	▤
FNA	M71-126-499	22.86	12.70	12.70	-	-	500	M71-R4300	⊗
FNAHSL	BM71-75-461	25.40	25.40	-	25.40	25.40	100	M71-R6200	▤
FNAHSL	M71-115-461	25.40	66.68	-	25.40	25.40	100	M71-R6200	▤
FNAHSL	M71-76-461	41.28	15.24	-	25.40	15.24	500	M71-R6200	■
FNAH L	M71-76-490	41.28	15.24	-	-	-	500	M71-R4300	▲
FN L	M71-78-492	48.26	25.40	-	-	-	250	M71-R6400	▲

>>

Conical / Large Tube Labels



BMP™71 PORTABLE LABEL PRINTER (CONTINUED)

Special Properties	Order Reference	Label Width A (mm)	Label Height B (mm)	Diameter C (mm)	Printable Area Width (mm)	Printable Area Height (mm)	Labels per Cartridge/Roll	Printer Ribbon	Diagram
2.0 - 4.0 Vial/Tube									
FNAHSL	M71-119-461	48.26	15.24	-	40.00	15.24	500	M71-R6200	■
12.0 - 24.0 ml Vial/Tube									
F	R BM71-29-498	12.70	38.10	-	-	-	5000	M71-R6200	▲
12.0 - 24.0 ml Vial/Tube; 50.0ml Conical Tube									
FNA	M71-29-499	12.70	38.10	-	-	-	500	M71-R4300	▲
F	R M71-29-498	38.10	12.70	-	-	-	500	M71-R6200	▲
50.0 ml Conical Tube									
FNA	M71-30-499	19.05	38.10	-	-	-	250	M71-R4300	▲
FNA	M71-31-499	25.40	38.10	-	-	-	250	M71-R4300	▲
FN	L M71-17-492	25.40	12.70	-	-	-	500	M71-R6400	▲
FNAHSL	M71-31-461	38.10	25.40	-	12.70	25.40	250	M71-R6200	■
FN	S BM71-30-427	38.10	38.10	-	19.05	12.70	2500	M71-R4300	■
FN	M71-30-427-AW	38.10	38.10	-	-	-	250	M71-R4300	▲
FNA	M71-78-499	48.26	25.40	-	-	-	250	M71-R4300	▲
50.0 ml Conical Tube/Bottles/Petri Dish/Deep Well Plate									
F	R M71-17-498	25.40	12.70	-	-	-	500	M71-R6200	▲
F	R M71-31-498	25.40	38.10	-	-	-	250	M71-R6200	▲

Any label 50.80 mm or larger is rotated on the liner. Order references beginning with "B" indicate bulk rolls. Order references with "C" (eg M71C) indicate continuous rolls.



TLS2200®/TLS PC LINK™ LABELLING SYSTEM

Special Properties	Order Reference	Label Width A (mm)	Label Height B (mm)	Diameter C (mm)	Printable Area Width (mm)	Printable Area Height (mm)	Labels per Cartridge/Roll	Printer Ribbon	Diagram
0.5 - 2.0 ml Vial/Tube									
FNAHSL	PTL-74-461	55.88	12.70	-	12.70	12.70	100	R-4310	▩
1.0 - 8.0 ml Vial/Tube									
FNA	PTL-117-499	22.86	12.70	12.70	22.86	12.70	500	R-4310	❖
FNAH L	PTL-76-490	41.28	15.24	-	-	-	250	R-4310	▲
FNAHSL	PTL-76-461	41.28	15.24	-	25.40	15.24	250	R-4310	■
FNAH L	PTL-78-490	48.26	25.40	-	-	-	250	R-4310	▲
FNAHSL	PTL-86-461	66.68	15.24	-	25.40	15.24	100	R-4310	▩
FNAHSL	PTL-75-461	66.68	25.40	-	25.40	25.40	100	R-4310	▩
FNAHSL	PTL-75-461-YL	66.68	25.40	-	25.40	25.40	100	R-4310	▩
12.0 - 24.0 ml Vial/Tube									
FNA	PTL-29-499	12.70	38.10	-	12.70	38.10	500	R-4310	▲
F	R PTL-29-498	12.70	38.10	-	38.10	12.70	500	R-6210	▲
FNAHSL	PTL-77-461	88.90	38.10	-	38.10	31.75	100	R-4310	▩
FNAHSL	PTL-79-461	95.25	19.05	-	19.05	25.40	100	R-4310	▩
14.0 - 15.0 ml Conical Tube									
FNAH L	PTL-113-490	55.88	38.10	-	-	-	100	R-4310	▲
50.0 ml Conical Tube									
FNA	PTL-30-499	19.05	38.10	-	-	-	250	R-4310	▲
FN	PTL-30-427-AW	38.10	19.05	-	38.10	19.05	250	R-4310	▲
FN	PTL-78-427-AW	48.26	25.40	-	48.26	25.40	250	R-4310	▲
FNAH L	PTL-114-490	98.43	38.10	-	-	-	100	R-4310	▲
50.0 ml Conical Tube/Bottles/Petri Dish/Deep Well Plate									
F	R PTL-17-498	25.40	12.70	-	25.40	12.70	500	R-6210	▲
FNA	PTL-31-499	25.40	38.10	-	25.40	38.10	250	R-4310	▲
F	R PTL-31-498	25.40	38.10	-	25.40	38.10	250	R-6210	▲
FNA	PTL-78-499	48.26	25.40	-	48.26	25.40	250	R-4310	▲

TLS2200 Consumables can be used in the BMP71 printer

Any label 50.80 mm or larger is rotated on the liner.

Order references beginning with "B" indicate bulk rolls.

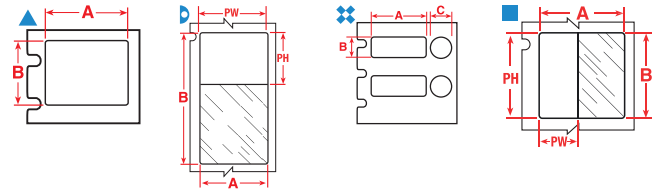


BBP™11 DESKTOP THERMAL TRANSFER PRINTER

Special Properties	Order Reference	Label Width A (mm)	Label Height B (mm)	Diameter C (mm)	Printable Area Width (mm)	Printable Area Height (mm)	Labels per Cartridge/Roll	Labels Per Row	Printer Ribbon	Diagram
0.5 - 0.7 ml Vial/Tube										
FNA	BPT-620-499	12.70	25.40	-	-	-	3000	1	R-4300	▲
FNAHSL	BPT-606-461	25.40	9.53	9.53	20.00	9.53	1000	1	R-4300	◆
FN L	THT-152-492-2.5-SC	25.40	9.53	-	-	-	2500	2	R-6400	▲
FNAHSL	THT-127-461-1.5-SC	55.88	55.90	-	19.05	12.70	1500	1	R-4300	■
0.5 - 8.0 ml Vial/Tube										
FN L	THT-249-492-1.5-SC	25.40	9.53	9.53	-	-	1500	1	R-6400	◆
FNA	THT-249-499-1.5-SC	25.40	9.53	9.53	-	-	1500	1	R-4300	◆
FN L	THT-251-492-1.5-SC	25.40	12.70	11.18	-	-	1500	1	R-6400	◆
0.6 ml Vial/Tube										
FNA	THT-125-499-1.5-SC	22.90	12.70	-	-	-	1500	1	R-4300	▲
1.0 - 2.0 ml Vial/Tube										
FNAHSL	BPT-612-461	15.24	66.68	-	15.24	25.40	1500	3	R-4300	▣
FNAHSL	BPT-628-461	38.10	15.24	-	33.00	15.24	2500	2	R-4300	■
FNAHSL	BPTLAB-20-461-2.5	40.00	15.00	9.00	30.00	15.00	2500	1	R-4300	◆
FNAHSL	BPTLAB-21-461-2.5	40.00	15.00	-	30.00	15.00	2500	1	R-4300	■
FNAHSL	BPT-608-461	41.28	15.24	12.70	30.00	15.24	1000	1	R-4300	◆
FNA	BPT-608-499	41.28	15.24	12.70	-	-	1000	1	R-4300	◆
1.0 - 8.0 ml Vial/Tube										
FN L	THT-88-492-2.5-SC	25.40	19.10	-	-	-	2500	2	R-6400	▲
FNAH L	THT-155-490-1.5-SC	41.28	15.24	-	-	-	1500	1	R-4300	▲
FNAH L	THT-156-490-1.5-SC	48.26	25.40	-	-	-	1500	1	R-4300	▲
FN L	THT-156-492-1.5-SC	48.26	25.40	-	-	-	1500	1	R-6400	▲
FNAHSL	THT-131-461-1.5-SC	66.68	25.40	-	25.40	25.40	1500	1	R-4300	■
1.5 - 2.0 ml Vial/Tube										
FN L	THT-59-492-2.5-SC	25.40	12.70	-	-	-	2500	1	R-6400	▲
FNAHSL	THT-133-461-1.5-SC	41.30	41.30	-	25.40	15.20	1500	1	R-4300	■
2.0 - 4.0 ml Vial/Tube										
FNAHSL	BPT-638-461	48.26	15.24	-	40.00	15.24	2000	1	R-4300	■
4.0 - 8.0 ml Vial/Tube										
FNA	BPT-625-499	25.40	66.68	-	-	-	1500	3	R-4300	▲
4.0 - 50.0 ml Vial/Tube										
FNAHSL	BPT-632-461	45.72	34.93	-	40.00	34.93	2000	1	R-4300	■
12.0 - 24.0 ml Vial/Tube										
FNAH L	THT-157-490-1.5-SC	55.88	38.10	-	-	-	1500	1	R-4300	▲
15.0 - 50.0 ml Vial/Tube										
FNA	BPT-618-499	22.86	38.10	-	-	-	3000	3	R-4300	▲
F R	BPT-621-498	25.40	36.50	-	25.40	36.50	3000	3	R-4300	▲
FNA	BPT-621-499	25.40	36.50	-	-	-	3000	3	R-4300	▲
FNAHSL	BPT-629-461	38.10	19.05	-	33.00	19.05	2500	2	R-4300	■
FNAHSL	BPT-636-461AW*	48.26	25.40	-	-	-	2000	1	R-4300	▲
FN S	BPT-640-427AW*	55.88	38.10	-	-	-	2000	1	R-4300	▲
FNAHSL	BPT-642-461-AW*	57.15	19.05	-	-	-	2000	1	R-4300	▲
FN S	BPT-648-427-AW*	66.68	25.40	-	-	-	2000	1	R-4300	▲
FNAHSL	BPT-650-461AW*	88.90	38.10	-	-	-	2000	1	R-4300	▲
50.0 ml Conical Tube										
FN L	THT-179-492-2.5-SC	25.40	25.40	-	-	-	2500	1	R-6400	▲
FNA	THT-136-499-1.5-SC	38.10	19.10	-	-	-	1500	1	R-4300	▲
FNA	THT-137-499-1.5-SC	50.80	25.40	-	-	-	1500	1	R-4300	▲
FNAH L	THT-158-490-1.5-SC	95.25	38.10	-	-	-	1500	1	R-4300	▲

* AW = All White / no transparent area

Conical / Large Tube Labels



IP AND BP PR PLUS THERMAL TRANSFER PRINTERS

Special Properties	Order Reference	Label Width A (mm)	Label Height B (mm)	Diameter C (mm)	Printable Area Width (mm)	Printable Area Height (mm)	Labels per Cartridge/ Roll	Labels Per Row	Printer Ribbon	Diagram	
0.5 - 0.7 ml Vial/Tube											
FNA	THT-68-499-10	12.70	19.05	-	-	-	10000	4	R-4900	IP™ Enabled ▲	
FN L	THT-152-492-3	25.40	9.53	-	-	-	3000	2	R-6400	IP™ Enabled ▲	
FNA	THT-152-499-3	25.40	25.40	-	-	-	3000	2	R-4902	IP™ Enabled ▲	
FNAHSL	THT-127-461-3	55.88	12.70	-	19.05	12.70	3000	1	R-4302	IP™ Enabled ■	
0.6 - 8.0 ml Vial/Tube											
FNA	THT-125-499-3	12.70	22.86	-	-	-	3000	1	R-4900	IP™ Enabled ▲	
1.0 - 2.0 ml Vial/Tube											
FNA	THT-163-499-3	25.40	9.53	9.53	25.40	-	3000	1	R-4900	IP™ Enabled ◆	
FN L	THT-163-492-3	25.40	9.53	9.53	25.40	-	3000	1	R-6400	IP™ Enabled ◆	
FN L	THT-181-492-3	25.40	12.70	9.53	25.40	-	3000	1	R-6400	IP™ Enabled ◆	
FN L	THT-182-492-3	25.40	12.70	11.18	25.40	-	3000	1	R-6400	IP™ Enabled ◆	
1.0 - 8.0 ml Vial/Tube											
FNA	THT-126-499-3	22.86	12.70	12.70	22.86	-	3000	1	R-4902	IP™ Enabled ◆	
FN L	THT-88-492-5	25.40	19.10	-	-	-	5000	2	R-6400	IP™ Enabled ▲	
FNAH L	THT-155-490-3	41.28	15.24	-	-	-	3000	1	R-4302	IP™ Enabled ▲	
FNAHSL	THT-133-461-3	41.28	15.24	-	25.40	15.24	3000	1	R-4302	IP™ Enabled ■	
FNAH L	THT-156-490-3	48.26	25.40	-	-	-	3000	1	R-4302	IP™ Enabled ▲	
FN L	THT-156-492-3	48.26	25.40	-	-	-	3000	1	R-6400	IP™ Enabled ▲	
FNAHSL	THT-153-461-3	66.68	15.24	-	25.40	15.24	3000	1	R-4302	IP™ Enabled ■	
FNAHSL	THT-131-461-3	66.68	25.40	-	25.40	25.40	3000	1	R-4300	IP™ Enabled ■	
1.5 - 2.0 ml Vial/Tube											
FN L	THT-59-492-10	25.40	12.70	-	25.40	12.70	10000	1	R-6400	IP™ Enabled ▲	
12.0 - 50.0 ml Vial/Tube											
FNAHSL	THT-139-461-2	25.40	25.40	-	25.40	38.10	2000	2	R-4306	IP™ Enabled ◐	
14.0 - 15.0 ml Conical Tube											
FNAH L	THT-157-490-3	55.88	38.10	-	-	-	3000	1	R-4300	IP™ Enabled ▲	
14.0 - 24.0 ml Conical Tube											
FNAHSL	THT-134-461-3	88.90	38.10	-	31.75	38.10	3000	1	R-4307	IP™ Enabled ■	
50.0 ml Conical Tube											
FNA	THT-136-499-3	19.05	38.10	-	-	-	3000	1	R-4300	IP™ Enabled ▲	
FN L	THT-180-492-3	22.86	25.40	-	22.86	25.40	3000	1	R-6400	IP™ Enabled ▲	
FN L	THT-179-492-3	25.40	25.40	-	25.40	25.40	3000	1	R-6400	IP™ Enabled ▲	
FN	THT-137-427-3-AW*	25.40	50.80	-	-	-	3000	1	R-4300	IP™ Enabled ▲	
FNA	THT-137-499-3	25.40	50.80	-	-	-	3000	1	R-4300	IP™ Enabled ▲	
FN	THT-135-427-3-AW*	38.10	19.05	-	-	-	3000	1	R-4300	IP™ Enabled ▲	
FNAH L	THT-158-490-3	95.25	38.10	-	-	-	3000	1	R-4300	IP™ Enabled ▲	

* AW = All White / no transparent area

IP™ Enabled - The printer automatically recognises these parts, and displays correct material & ribbon and automatically calibrates.

For IP enabled ribbons, please prefix part with IP e.g IP-R6000.

F Freezer environment **N** Liquid nitrogen environment **A** Autoclave environment **H** Hot water bath (100°C) **S** Self-laminating label **L** Low-profile (extremely thin) label **R** Removable



B-492 (FreezerBondz™)

“The special FreezerBondz™ labels are very reliable: they stick to the glass vials we use for our frozen fish tissue samples and, just as important, they remain readable to maintain accurate sample identification in long-term storage.”

Centre for Ecology & Hydrology, UK

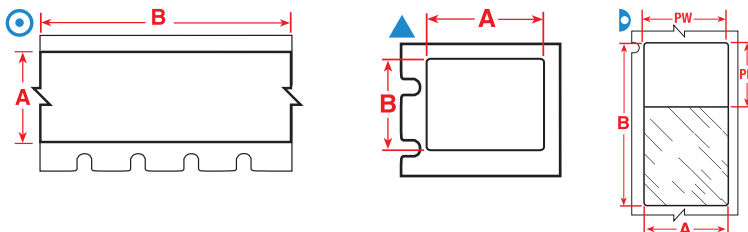
Read the full article on <http://www.bradyeurope.com/labid>



CONICAL / LARGE TUBE LABELS

- F** Freezer environment
- N** Liquid nitrogen environment
- A** Autoclave environment
- H** Hot water bath (100°C)
- S** Self-laminating label
- L** Low-profile (extremely thin) label
- R** Removable

Brady B-481 StainerBondz™ Slide Labels are designed to adhere to slides from sectioning through staining - for crisp, clear, long-term sample traceability. StainerBondz Slide Labels resist exposure to xylene, ethanol and other solvents, providing reliable traceability of slides from the front of your process. Identify your slide with StainerBondz labels before staining and know your samples will remain legible for the years ahead.



BMP™21 HAND-HELD LABEL PRINTER

Special Properties	Order Reference	Label Width A (mm)	Label Length B (m)	Labels per Cartridge/Roll	Diagram
F A	M21-375-488	9.53	6.40	Continuous	⊙
F A	M21-500-488	12.70	6.40	Continuous	⊙
F A	M21-750-488	19.05	6.40	Continuous	⊙



BMP™51/BMP™51 LABEL MAKERS

Special Properties	Order Reference	Label Width A (mm)	Label Height B (mm)	Labels per Cartridge/Roll	Diagram
F A	M-81-488	6.35	48.26	160	▲
F A	M-97-488	22.86	22.86	280	▲



LABXPERT™ LABORATORY LABELLING SYSTEM

Special Properties	Order Reference	Label Width A (mm)	Label Height B (mm)	Labels per Cartridge/Roll	Diagram
F A	X-195-481	9.53	22.86	400	▲
F A	X-194-481	19.05	22.86	400	▲
F A	X-97-488	22.86	22.86	350	▲
F A	X-97-481	22.86	22.86	350	▲
F A	X-81-488	48.26	6.35	200	▲



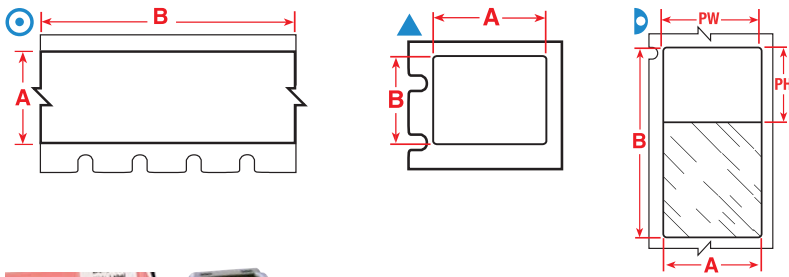
BMP™71 PORTABLE LABEL PRINTER

Special Properties	Order Reference	Label Width A (mm)	Label Height B (mm)	Labels per Cartridge/Roll	Printer Ribbon	Diagram
F A	M71-80-488	19.05	22.86	250	M71-R4300	▲
F A	M71-97-488	22.86	22.86	250	M71-R4300	▲
F A H	M71-97-481	22.86	22.86	250	M71-R6400	▲

Any label 50.80 mm or larger is rotated on the liner.

Order references beginning with "B" indicate bulk rolls.

Order references with "C" (eg M71C) indicate continuous rolls.



TLS2200®/TLS PC LINK™ LABELLING SYSTEM

Special Properties	Order Reference	Label Width A (mm)	Label Height B (mm)	Labels per Cartridge/Roll	Labels Per Row	Printer Ribbon	Diagram
F A	PTL-80-488	19.05	22.86	250	1	R-4310	▲
F	PTL-80-424	22.86	19.05	250	1	R-4310	▲
F A	PTL-97-488	22.86	22.86	250	1	R-4310	▲
F A	PTL-97-481	22.86	22.86	250	1	R-6410	▲
F A	PTL-78-488	48.26	25.40	250	1	R-4310	▲

TLS2200 Consumables can be used in the BMP71 printer

Any label 50.80 mm or larger is rotated on the liner.

Order references beginning with "B" indicate bulk rolls.



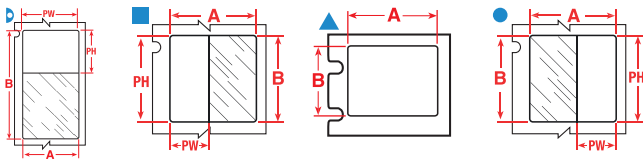
BBP™11 DESKTOP THERMAL TRANSFER PRINTER

Special Properties	Order Reference	Label Width A (mm)	Label Height B (mm)	Labels per Cartridge/Roll	Labels Per Row	Printer Ribbon	Diagram
F A	THT-140-488-1.5-SC	19.05	22.86	1500	2	R-4300	▲
F A	BPT-194-481	19.05	22.86	2500	1	R-6400	▲
F A	BPT-616-488	22.86	19.05	3000	3	RGR	▲
F A	BPT-617-488	22.86	22.86	3000	3	RGR	▲
F A	BPT-164-481	22.86	22.86	2500	1	R-6400	▲
F A	THT-207-481-2.5-SC	22.86	22.86	2500	4	R-6413	▲
F A	THT-141-481-1.5-SC	22.90	22.90	1500	2	R-6400	▲
F A	THT-142-481-2.5-SC	63.50	5.10	2500	1	R-6400	▲



IP AND BP PR PLUS THERMAL TRANSFER PRINTERS

Special Properties	Order Reference	Label Width A (mm)	Label Height B (mm)	Printable Area Width (mm)	Printable Area Height (mm)	Labels per Cartridge/Roll	Labels Per Row	Printer Ribbon	Diagram
F A	THT-195-481-3	22.86	9.53	-	-	3000	1	IP-R6400 IP™ Enabled	▲
F A	THT-140-488-3	22.86	19.05	-	-	3000	2	IP-R4300 IP™ Enabled	▲
F A	THT-194-481-3	22.86	19.05	-	-	3000	1	IP-R6400 IP™ Enabled	▲
F A	THT-164-488-1	22.86	22.86	-	-	1000	1	IP-R4300 IP™ Enabled	▲
F A	THT-141-488-3	22.86	22.86	-	-	3000	2	IP-R4300 IP™ Enabled	▲
F A	THT-141-481-3	22.86	22.86	-	-	3000	2	IP-R6400 IP™ Enabled	▲
F N S	THT-10-427-3	25.40	95.25	25.40	25.40	3000	3	IP-R4300 IP™ Enabled	Ⓛ
F A	THT-5-488-10	25.40	12.70	-	-	10000	3	IP-R4300 IP™ Enabled	▲
F A	THT-15-488-2.5	50.80	6.35	-	-	2500	1	IP-R4300 IP™ Enabled	▲
F A	THT-142-481-2.5	63.50	5.10	-	-	2500	1	IP-R6400 IP™ Enabled	▲



- F** Freezer environment
- N** Liquid nitrogen environment
- A** Autoclave environment
- H** Hot water bath (100°C)
- S** Self-laminating label
- L** Low-profile (extremely thin) label
- R** Removable



BMP™51/BMP™51 LABEL MAKERS

Special Properties	Order Reference	Label Width A (mm)	Label Height B (mm)	Printable Area Width (mm)	Printable Area Height (mm)	Labels per Cartridge/Roll	Diagram
FN S	M-105-427-AW*	27.94	6.35	-	-	360	▲
0.25 ml							
FN S	M-133-427	25.40	44.45	9.53	44.45	140	■
0.50 ml							
FN S	M-134-427	38.10	44.45	12.70	44.45	140	■

* AW = All White / no transparent area



LABXPERT™ LABORATORY LABELLING SYSTEM

Special Properties	Order Reference	Label Width A (mm)	Label Height B (mm)	Printable Area Width (mm)	Printable Area Height (mm)	Labels per Cartridge/Roll	Diagram
0.25 ml Straw							
FN S	XSL-133-427	25.40	25.40	9.53	9.53	175	●
Straw Rod							
FN	X-105-427-AW*	27.94	6.35	27.94	6.35	500	▲
0.50 ml Straw							
FN S	XSL-134-427	38.10	44.45	12.70	12.70	175	●

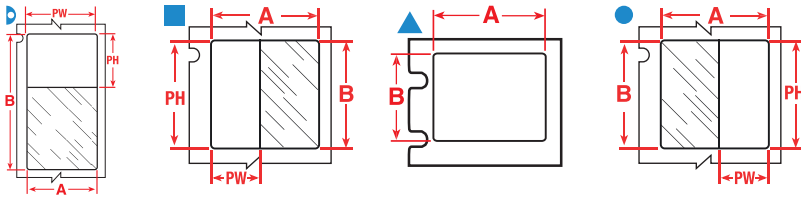
* AW = All White / no transparent area



BMP™71 PORTABLE LABEL PRINTER

Special Properties	Order Reference	Label Width A (mm)	Label Height B (mm)	Printable Area Width (mm)	Printable Area Height (mm)	Labels per Cartridge/Roll	Labels Per Row	Printer Ribbon	Diagram
0.25 ml Straw									
FN S	M71-19-427-YL	25.40	25.40	25.40	9.53	250	1	M71-R4300	▯
FN S	M71-19-427	25.40	25.40	25.40	9.53	250	1	M71-R4300	▯
FN S	BM71-19-427	25.40	25.40	25.40	9.53	2500	1	M71-R4300	▯
0.50 ml Straw									
FN S	BM71-21-427	25.40	63.50	25.40	19.05	1000	1	M71-R4300	▯
FN S	M71-21-427-YL	25.40	63.50	25.40	19.05	100	1	M71-R4300	▯
FN S	M71-21-427	25.40	63.50	25.40	19.05	100	1	M71-R4300	▯
0.25 ml Straw									
FNAHSL	M71-19-461	25.40	25.40	25.40	9.53	250	1	M71-R4300	▯
FN L	M71-19-492	25.40	25.40	-	-	250	1	M71-R6400	▲

Any label 50.80 mm or larger is rotated on the liner. Order references beginning with "B" indicate bulk rolls. Order references with "C" (eg M71C) indicate continuous rolls.



TLS2200®/TLS PC LINK™ LABELLING SYSTEM

Special Properties	Order Reference	Label Width A (mm)	Label Height B (mm)	Printable Area Width (mm)	Printable Area Height (mm)	Labels per Cartridge/Roll	Printer Ribbon	Diagram
FN S	PTL-19-427	25.40	25.40	25.40	9.53	250	R-4310	
FN S	PTL-21-427	25.40	63.50	25.40	19.05	100	R-4310	
FN	PTL-105-427-AW	27.94	6.35	27.94	6.35	750	R-4310	

TLS2200 Consumables can be used in the BMP71 printer.



BBP™11 DESKTOP THERMAL TRANSFER PRINTER

Special Properties	Order Reference	Label Width A (mm)	Label Height B (mm)	Printable Area Width (mm)	Printable Area Height (mm)	Labels per Cartridge/Roll	Labels Per Row	Printer Ribbon	Diagram
FN S	BPTLAB-35-427-YL	20.00	20.00	-	-	1000	1	R-4300	
FN A H S L	BPT-627-461	27.94	6.35	22.00	6.35	1000	1	R-4300	

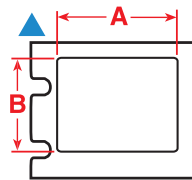
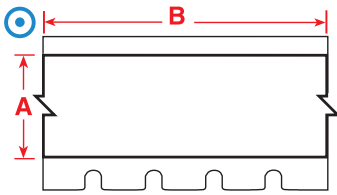


IP AND BP PR PLUS THERMAL TRANSFER PRINTERS

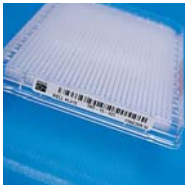
Special Properties	Order Reference	Label Width A (mm)	Label Height B (mm)	Printable Area Width (mm)	Printable Area Height (mm)	Labels per Cartridge/Roll	Labels Per Row	Printer Ribbon	Diagram
FN S	THT-116-427	25.40	25.40	25.40	9.53	5000	2	R-4300 IP™ Enabled	



Go watch our videos on <http://www.bradyeurope.com/labid>



- F** Freezer environment
- N** Liquid nitrogen environment
- A** Autoclave environment
- H** Hot water bath (100°C)
- S** Self-laminating label
- L** Low-profile (extremely thin) label
- R** Removable



BMP™21 HAND-HELD LABEL PRINTER

Special Properties	Order Reference	Label Width A (mm)	Label Length B (m)	Labels per Cartridge/Roll	Diagram
FNA	M21-375-499	9.53	4.80	Continuous	⊙
F A	M21-375-423	9.53	6.40	Continuous	⊙
FNA	M21-500-499	12.70	4.80	Continuous	⊙
F A	M21-500-423	12.70	6.40	Continuous	⊙
FNA	M21-750-499	19.05	4.80	Continuous	⊙
F A	M21-750-423	19.05	6.40	Continuous	⊙



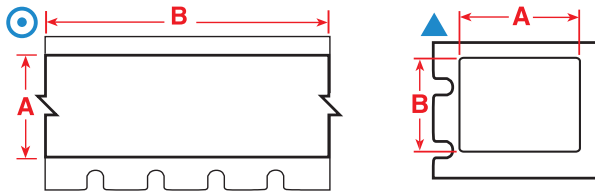
BMP™51/BMP™51 LABEL MAKERS

Special Properties	Order Reference	Label Width A (mm)	Label Height B (mm)	Labels per Cartridge/Roll	Diagram
F A	M-81-488	6.35	48.26	160	▲



LABXPERT™ LABORATORY LABELLING SYSTEM

Special Properties	Order Reference	Label Width A (mm)	Label Height B (mm)	Labels per Cartridge/Roll	Diagram
FNA	X-130-499	9.53	20.96	275	▲
FNA	X-131-499	25.40	12.70	225	▲
FNA	X-78-499	25.40	48.26	125	▲
FNA	X-132-499	31.75	38.10	200	▲
FNA	X-162-499	38.10	12.70	165	▲
FNA	X-30-499	38.10	19.05	300	▲
F A	X-81-488	48.26	6.35	200	▲



BMP™71 PORTABLE LABEL PRINTER

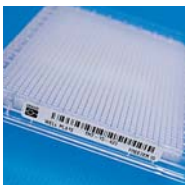
Special Properties	Order Reference	Label Width A (mm)	Label Height B (mm)	Label Length B (m)	Labels per Cartridge/Roll	Printer Ribbon	Diagram
F A	M71-7-423	12.70	12.70	-	500	M71-R6000	▲
F A	BM71-7-423	12.70	12.70	-	5000	M71-R6000	▲
FNA	M71-29-499	12.70	38.10	-	500	M71-R4300	▲
F R	BM71-29-498	12.70	38.10	-	5000	M71-R6200	▲
FNA	M71C-500-499	12.70	-	9.10	Continuous	M71-R4300	⊙
FNA	M71-30-499	19.05	38.10	-	250	M71-R4300	▲
FNA	M71-84-499	22.86	12.70	-	500	M71-R4300	▲
FNA	M71C-1000-499	25.40	-	9.10	Continuous	M71-R4300	⊙
F R	M71-17-498	25.40	12.70	-	500	M71-R6200	▲
F R	M71-31-498	25.40	38.10	-	250	M71-R6200	▲
FNA	M71-31-499	25.40	38.10	-	250	M71-R4300	▲
FN	M71-30-427-AW	38.10	38.10	-	250	M71-R4300	▲
FNA	M71C-1900-499	48.26	-	9.10	Continuous	M71-R4300	⊙
F A	M71-81-488	48.26	6.35	-	750	M71-R4300	▲
FNA	M71-81-499	48.26	6.35	-	750	M71-R4300	▲
FNA	M71-78-499	48.26	25.40	-	250	M71-R4300	▲
F A	M71-2-423	50.80	6.35	-	100	M71-R6000	▲

Any label 50.80 mm or larger is rotated on the liner.

Order references beginning with "B" indicate bulk rolls.

Order references with "C" (eg M71C) indicate continuous rolls.

WELL PLATE LABELS



TLS2200®/TLS PC LINK™ LABELLING SYSTEM

Special Properties	Order Reference	Label Width A (mm)	Label Height B (mm)	Labels per Cartridge/Roll	Labels Per Row	Printer Ribbon	Diagram
FNA	PTL-7-499	12.70	12.70	500	1	R-4310	▲
FNA	PTL-81-499	48.26	6.35	750	1	R-4310	▲
F A	PTL-81-488	48.26	6.35	750	1	R-4310	▲
F A	PTL-2-423	50.80	6.35	100	1	R-6010	▲

TLS2200 Consumables can be used in the BMP71 printer

Any label 50.80 mm or larger is rotated on the liner.

Order references beginning with "B" indicate bulk rolls.

F Freezer environment N Liquid nitrogen environment A Autoclave environment H Hot water bath (100°C) S Self-laminating label L Low-profile (extremely thin) label R Removable



BBP™11 DESKTOP THERMAL TRANSFER PRINTER

Special Properties	Order Reference	Label Width A (mm)	Label Height B (mm)	Labels per Cartridge/Roll	Labels Per Row	Printer Ribbon	Diagram
F A	BPT-1-8423-2.5	19.05	6.35	2500	5	R-6000	▲
F A R	BPT-621-498	25.40	36.50	3000	3	R-4300	▲
F N A	THT-152-499-1.5-SC	25.40	9.50	1500	2	R-4300	▲
F A	BPT-6-8423-2.5	38.10	19.05	2500	2	R-6000	▲
F A	BPT-635-488	48.26	6.35	2000	1	R-4300	▲
F A	THT-15-423-2.5-SC	50.80	6.40	2500	1	R-6000	▲
F N A	THT-151-499-1.5-SC	50.80	6.40	1500	1	R-4300	▲



IP AND BP PR PLUS THERMAL TRANSFER PRINTERS

Special Properties	Order Reference	Label Width A (mm)	Label Height B (mm)	Labels per Cartridge/Roll	Labels Per Row	Printer Ribbon	Diagram
F N A	THT-136-499-3	19.05	38.10	3000	1	R-4300 IP™ Enabled	▲
F N A	THT-152-499-3	25.40	25.40	3000	2	R-4902 IP™ Enabled	▲
F A	THT-15-423-2.5	50.80	6.35	2500	1	R-6000 IP™ Enabled	▲
F N A	THT-151-499-3	50.80	6.35	3000	1	R-4900 IP™ Enabled	▲
F A	THT-142-423-2.5	63.50	5.08	2500	1	R-6000 IP™ Enabled	▲

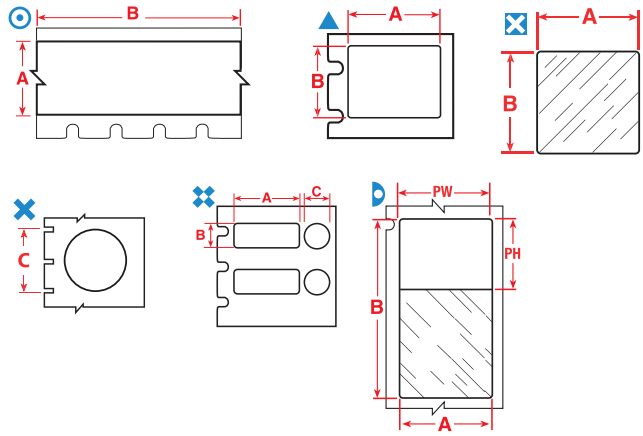


To find out how Brady helps some of the world's leading research laboratories develop more efficient labelling protocols visit <http://www.bradyeurope.com/labid>





- F** Freezer environment
- N** Liquid nitrogen environment
- A** Autoclave environment
- H** Hot water bath (100°C)
- S** Self-laminating label
- L** Low-profile (extremely thin) label
- R** Removable



BMP™51/BMP™53 LABEL MAKERS

Special Properties	Order Reference	Label Width A (mm)	Label Height B (mm)	Diagram
FNA	M-130-499	9.53	20.96	▲
FN R	M-163-498	12.70	25.40	▲
FN R	M-131-498	12.70	25.40	▲
FNA	M-131-499	12.70	25.40	▲
F A	M-17-432-CL-BK	25.40	12.70	▲
FN R	M-103-498	25.40	31.75	▲
FN R	M-78-498	25.40	48.26	▲
FNA	M-132-499	38.10	31.75	▲



BMP™21 HAND-HELD LABEL PRINTER

Special Properties	Order Reference	Label Width A (mm)	Label Length B (mm)	Diagram
F A	M21-375-423	9.53	6.40	⊙
F A	M21-375-430	9.53	6.40	⊙
F A	M21-375-488	9.53	6.40	⊙
F A	M21-500-423	12.70	6.40	⊙
F A	M21-500-430	12.70	6.40	⊙
F A	M21-500-488	12.70	6.40	⊙
F A	M21-750-423	19.05	6.40	⊙
F A	M21-750-430	19.05	6.40	⊙
F A	M21-750-488	19.05	6.40	⊙



LABXPERT™ LABELLING SYSTEM

Special Properties	Order Reference	Label Width A (mm)	Label Height B (mm)	Labels per Cartridge/Roll	Diagram
FNA R	X-130-499	9.53	20.96	275	▲
FNA R	X-162-498	12.70	38.10	165	▲
F R	X-131-498	25.40	12.70	225	▲
FNA	X-131-499	25.40	12.70	225	▲
F A	X-17-432-CL-BK	25.40	12.70	350	⊗
F R	X-103-498	25.40	31.75	200	▲
F R	X-78-498	25.40	48.26	125	▲
FNA	X-78-499	25.40	48.26	125	▲

>>

LABXPERT™ LABELLING SYSTEM (CONTINUED)

Special Properties	Order Reference	Label Width A (mm)	Label Height B (mm)	Labels per Cartridge/Roll	Diagram
F A	X-78-432-CL-BK	25.40	48.26	100	⊗
FN L	X-155-492	31.40	6.35	400	▲
FNA	X-132-499	31.75	38.10	200	▲
FNA	X-162-499	38.10	12.70	165	▲
FNA	X-30-499	38.10	19.05	300	▲



BMP™71 PORTABLE LABEL PRINTER

Special Properties	Order Reference	Label Width A (mm)	Label Height B (mm)	Label Length B (m)	Labels per Cartridge/Roll	Printer Ribbon	Diagram
F A	M71-7-423	12.70	12.70	-	500	M71-R6000	▲
F A	BM71-7-423	12.70	12.70	-	5000	M71-R6000	▲
F R	M71C-500-498	12.70	-	9.10	Continuous	M71-R6200	⊙
F A	M71C-500-430	12.70	-	15.24	Continuous	M71-R6000	⊙
F A	M71-14-423	25.40	4.75	-	750	M71-R6000	▲
F A	M71-15-423	25.40	6.99	-	750	M71-R6000	▲
F A	M71-17-430	25.40	12.70	-	500	M71-R6000	⊗
F A	M71-17-423	25.40	12.70	-	500	M71-R6000	▲
F A	M71-31-423	38.10	25.40	-	250	M71-R6000	▲
FN	M71-30-427-AW	38.10	38.10	-	250	M71-R4300	▲
F A	M71-20-423	50.80	25.40	-	100	M71-R6000	▲
F A	BM71-20-423	50.80	25.40	-	1000	M71-R6000	▲
F A	M71-22-423	76.20	25.40	-	100	M71-R6000	▲

Any label 50.80 mm or larger is rotated on the liner.

Order references beginning with "B" indicate bulk rolls.

Order references with "C" (eg M71C) indicate continuous rolls.



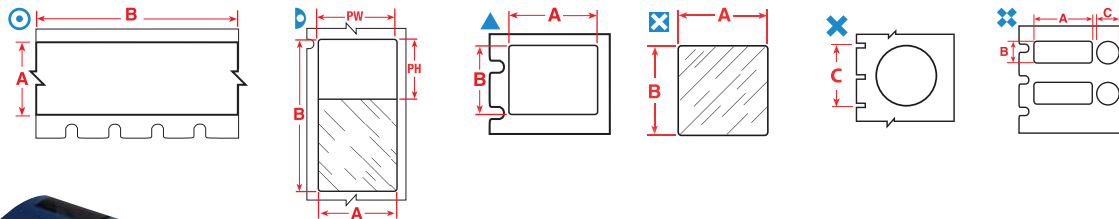
TLS2200®/TLS PC LINK™ LABELLING SYSTEM

Special Properties	Order Reference	Label Width A (mm)	Label Height B (mm)	Label Length B (m)	Diameter C (mm)	Labels per Cartridge/Roll	Printer Ribbon	Diagram
FNA	PTL-7-499	12.70	12.70	-	-	500	R-4310	▲
F R	PTL-7-498	12.70	12.70	-	-	500	R-6210	▲
F A	PTL-7-432	12.70	12.70	-	-	500	R-6010	⊗
F A	PTL-11-432	19.05	12.70	-	-	500	R-6010	⊗
FNA	PTL-117-499	22.86	12.70	-	12.70	500	R-4310	⊗
F	PTL-42-439	25.40	-	15.24	-	Continuous	R-6010	⊙
F	PTL-42-439-OR	25.40	-	15.24	-	Continuous	R-6010	⊙
F	PTL-42-439-YL	25.40	-	15.24	-	Continuous	R-6010	⊙
F	PTL-42-439-RD	25.40	-	15.24	-	Continuous	R-6010	⊙
F A R	PTL-17-449	25.40	12.70	-	-	500	R-4310	▲
F A	PTL-31-423	38.10	25.40	-	-	250	R-6010	▲
F A	PTL-78-488	48.26	25.40	-	-	250	R-4310	▲
FNAH L	PTL-114-490	98.43	38.10	-	-	100	R-4310	▲

TLS Consumables can be used in the BMP™71 Printer.

Any label 50.80mm or larger is rotated on the liner.

Order references beginning with "B" indicate bulk rolls



BBP™11 DESKTOP THERMAL TRANSFER PRINTER

Special Properties	Order Reference	Label Width A (mm)	Label Height B (mm)	Diameter C (mm)	Labels per Cartridge/Roll	Labels Per Row	Printer Ribbon	Diagram
FNA	THT-144-499-1.5-SC	-	-	12.70	1500	3	R-4300	✘
F A	THT-140-488-1.5-SC	19.05	22.86	-	1500	2	R-4300	▲
FN S	BPTLAB-35-427-YL	20.00	20.00	-	1000	1	R-4300	▲
F A	THT-164-488-1-SC	22.86	22.86	-	1000	1	R-4300	▲
FNA	THT-125-499-1.5-SC	22.90	12.70	-	1500	1	R-4300	▲
FNA	THT-152-499-1.5-SC	25.40	9.50	-	1500	2	R-4300	▲
FNA	THT-249-499-1.5-SC	25.40	9.53	9.53	1500	1	R-4300	✘
F R	THT-59-433-2.5-SC	25.40	12.70	-	2500	1	R-6000	▲
F R	THT-59-498-2.5-SC	25.40	12.70	-	2500	1	R-4300	▲
F R	THT-199-498-3-SC	28.70	6.40	-	3000	1	R-4300	▲
FNA	THT-136-499-1.5-SC	38.10	19.10	-	1500	1	R-4300	▲
F A R	THT-6-449-1.5-SC	38.10	19.10	-	1500	2	R-4300	▲
FNA	THT-151-499-1.5-SC	50.80	6.40	-	1500	1	R-4300	▲
FNA	THT-137-499-1.5-SC	50.80	25.40	-	1500	1	R-4300	▲
F A R	THT-17-449-1.5-SC	50.80	25.40	-	1500	1	R-4300	▲
F R	THT-17-433-1.5-SC	50.80	25.40	-	1500	1	R-6000	▲
F A R	THT-17-498-1.5-SC	50.80	25.40	-	1500	1	R-4300	▲
FNAH L	THT-158-490-1.5-SC	95.25	38.10	-	1500	1	R-4300	▲



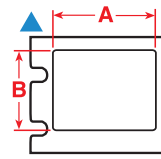
IP AND BP PR PLUS THERMAL TRANSFER PRINTERS

Special Properties	Order Reference	Label Width A (mm)	Label Height B (mm)	Diameter C (mm)	Labels per Cartridge/Roll	Labels Per Row	Printer Ribbon	Diagram
FNA	THT-68-499-10	12.70	19.05	-	10000	4	R-4900	▲
FNA	THT-125-499-3	12.70	22.86	-	3000	1	R-4900	▲
FNA	THT-126-499-3	22.86	12.70	12.70	3000	1	R-4902	✘
F A	THT-140-488-3	22.86	19.05	-	3000	2	IP-R4300	▲
F A	THT-164-488-1	22.86	22.86	-	1000	1	IP-R4300	▲
F A	THT-141-488-3	22.86	22.86	-	3000	2	IP-R4300	▲
F A	THT-5-488-10	25.40	12.70	-	10000	3	IP-R4300	▲
F R	THT-59-433-10	25.40	12.70	-	10000	1	R-6000	▲
F R	THT-59-498-10	25.40	12.70	-	10000	1	R-4300	▲
FN L	THT-88-492-5	25.40	19.10	-	5000	2	R-6400	▲
F R	THT-199-498-3	26.66	6.35	-	3000	1	R-4300	▲
F A R	THT-6-449-3	38.10	19.10	-	3000	2	R-4300	▲
F A	THT-17-423-3	50.80	25.40	-	3000	1	R-6000	▲
F A	THT-15-488-2.5	50.80	6.35	-	2500	1	IP-R4300	▲
F A	THT-17-430-3	50.80	25.40	-	3000	1	R-6000	✘
F R	THT-17-433-3	50.80	25.40	-	3000	1	R-6000	▲
F R	THT-17-498-3	50.80	25.40	-	3000	1	R-4300	▲
F A	THT-21-430	76.20	-	-	Continuous	1	R-6000	◎
F A	THT-18-423-3	76.20	25.40	-	3000	1	R-6000	▲
F A	THT-18-430-3	76.20	25.40	-	3000	1	R-6000	✘
F A	THT-19-430-1	76.20	50.80	-	1000	1	R-6000	✘
FNAH L	THT-158-490-3	95.25	38.10	-	3000	1	R-4300	▲

F Freezer environment **N** Liquid nitrogen environment **A** Autoclave environment **H** Hot water bath (100°C) **S** Self-laminating label **L** Low-profile (extremely thin) label **R** Removable

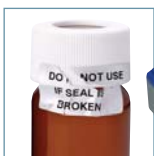


- F** Freezer environment
- N** Liquid nitrogen environment
- A** Autoclave environment
- H** Hot water bath (100°C)
- S** Self-laminating label
- L** Low-profile (extremely thin) label
- R** Removable



LABXPERT™ LABELLING SYSTEM

Special Properties	Order Reference	Label Width A (mm)	Label Height B (mm)	Labels per Cartridge/Roll	Diagram
F	X-17-351	25.40	12.70	500	▲
F	X-20-351	50.80	25.40	200	▲



BMP™51/BMP™53 LABEL MAKERS

Special Properties	Order Reference	Label Width A (mm)	Label Height B (mm)	Labels per Cartridge/Roll	Diagram
F	M-17-351	25.40	12.70	360	▲



BMP™71 PORTABLE LABEL PRINTER

Special Properties	Order Reference	Label Width A (mm)	Label Height B (mm)	Labels per Cartridge/Roll	Printer Ribbon	Diagram
F	M71-17-351	25.40	12.70	500	M71-R6000	▲
F	M71-31-351	38.10	25.40	250	M71-R6000	▲
F	M71-20-351	50.80	25.40	100	M71-R6000	▲
F	M71-37-351	76.20	48.26	100	M71-R6000	▲

Any label 50.80 mm or larger is rotated on the liner.

Order references beginning with "B" indicate bulk rolls.

Order references with "C" (eg M71C) indicate continuous rolls.



IP AND BP PR PLUS THERMAL TRANSFER PRINTERS

Special Properties	Order Reference	Label Width A (mm)	Label Height B (mm)	Labels per Cartridge/Roll	Labels Per Row	Printer Ribbon	Diagram
F	THT-5-7351-10	25.40	12.70	10000	3	R-6000	IP™ Enabled ▲
F	THT-17-7351-3	50.80	25.40	3000	1	R-6000	IP™ Enabled ▲



Art. No.	Order Reference	Description
114631	BRUSH KIT,BSP31	Cleaning Brushes for the BSP31
804850	BSP31 LABEL ATTACHMENT SYSTEM EUROPE	BSP31 Suitable for Europe and UK
804855	BSP31 -KIT LIGHT EUR	BSP31 Light Kit Europe version - 220V
804856	BSP™31 -Kit Light UK*	BSP31 Light Kit UK version - 240V
804858	BSP31 -KIT FULL EUR	BSP31 Full Kit Europe version - 220V
804859	BSP™31 -Kit Full UK**	BSP31 Full Kit UK version - 240V
804866	ASSY FILTER BSP31 RC	Filter for the BSP31

* BSP™31 Label Attachment System + BBP11 Printer

** BSP™31 Label Attachment System + BBP11 Printer + CR2500 Barcode Reader + B-482 Tissue Cassette Labels + B-481 StainerBondz™ Labels + R-6400 Thermal Transfer Ribbons

BSP™31 LABEL ATTACHMENT SYSTEM

- Brady has developed a unique set of products for the histology and anatomic pathology market in order to guarantee pre-process identification for tissue samples allowing traceability throughout laboratory processes as well as long term storage (< 20 years).
- The BSP™31 Label Attachment System is designed to mechanically fasten and adhesive label to a tissue cassette before the tissue embedding process. This easy-to-use unit creates rivets on the label which prevent the label from detaching during the embedding process or during long-term storage
- When a cassette is inserted into the front of the unit, a clamp automatically grabs the cassette. In less that a minute, four small heat probes pierce through the label and front plastic of the cassette. Heat applied to the probes melts the cassette plastic and forms rivets on the label. When the unit retracts the probes from the cassette, the cassette is released and the user can remove it and place the biospecimen onto the cassette.
- The BSP™31 unit must be used exclusively with Brady B-482 label material and the R-6400 thermal transfer printer ribbon.

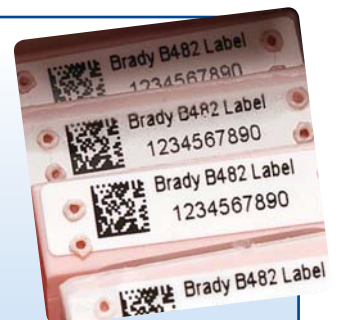


B-482 Tissue cassette labels

“We have received very positive feedback on the Brady cassette labels from researchers. They report that, as well as looking much more professional, the printed labels save time when they need to search through their archived blocks for a particular sample. Black text printed on a white label is very much quicker and easier to read than pencil on a green cassette. The clear labels therefore eliminate any confusion or mistakes which could occur with handwritten data.”

Cardiff University – School of Biosciences, UK

Read the full article on <http://www.bradyeurope.com/labid>



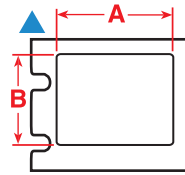
B-498 Re-Identify Tissue Cassettes Labels

Tissue cassettes are often re-identified when labs collect samples from various biorepositories. Typically, each laboratory has its own unique way of identifying samples, which creates a need to re-identify samples in a common way.

Brady B-498 post-process labels offer customers the optimal way to organise these specimens and conduct further studies. These labels can be applied directly onto the cassettes, on pure paraffin wax and on top of another label or identifier.

This is not the same as Brady's B-482 tissue cassette solution. **B-498 Re-identify labels are applied after processing and are never used with the BSP31 label attachment system.**





BMP™51/BMP™51 LABEL MAKERS

Special Properties	Order Reference	Label Width A (mm)	Label Height B (mm)	Labels per Cartridge/Roll	Diagram
F N R	M-11-498	19.05	12.70	220	▲



LABXPERT™ LABORATORY LABELLING SYSTEM

Special Properties	Order Reference	Label Width A (mm)	Label Height B (mm)	Labels per Cartridge/Roll	Diagram
	X-127-482	25.50	6.35	450	▲



BBP™11 DESKTOP THERMAL TRANSFER PRINTER

Special Properties	Order Reference	Label Width A (mm)	Label Height B (mm)	Labels per Cartridge/Roll	Labels Per Row	Printer Ribbon	Diagram
F R	THT-252-498-3-SC	19.10	6.40	3000	1	R-4300	▲
F R	THT-254-498-1.5-SC	19.10	19.10	1500	1	R-4300	▲
F R	THT-253-498-3-SC	25.40	4.80	3000	1	R-4300	▲
	THT-199-482-3-SC	25.50	6.35	3000	1	R-6400	▲
	THT-213-482-3-SC	26.67	8.00	3000	1	R-6400	▲



IP AND BP PR PLUS THERMAL TRANSFER PRINTERS

Special Properties	Order Reference	Label Width A (mm)	Label Height B (mm)	Labels per Cartridge/Roll	Labels Per Row	Printer Ribbon	Diagram
F R	THT-252-498-3	19.10	6.40	3000	1	R-4300 IP™ Enabled	▲
F R	THT-254-498-3	19.10	19.10	3000	1	R-4300 IP™ Enabled	▲
F R	THT-253-498-3	25.40	4.80	3000	1	R-4300 IP™ Enabled	▲
	THT-199-482-3	25.50	6.35	3000	1	R-6400 IP™ Enabled	▲
	THT-213-482-3	26.67	8.00	3000	–	R-6400 IP™ Enabled	▲



Specimen Labelling Solution for Histology and Anatomic Pathology

As part of Brady's complete laboratory labelling solution, our combination of the B-482 Tissue Cassette label and the BSP™31 Label Attachment System, ensures your specimen labels will stick throughout processing, embedding and sectioning.

Choose Your Printer



BMP™21 Hand-held Label Printer

BMP™21 portable printer can quickly and easily create clear, legible labels that stay stuck for years.



BMP™21 tapes can be used in the LABPAL™ Printer



LABXPRT™ Laboratory Labelling System

With the LABXPRT™ Laboratory Labelling System you have a powerful, yet affordable tool at your fingertips! Produce legible, professional looking labels for your lab samples, while drastically reducing the time it actually takes to label.



BMP53 Label Maker

The BMP53 Label Maker is a compact, versatile portable printer with built-in Bluetooth® technology for wireless printing



BMP51 Label Maker

The BMP51 Label Maker is a compact, versatile portable printer with built-in Bluetooth® technology for wireless printing



BMP™71 Portable Label Printer

The BMP71 is your essential tool that handles all your labelling needs.



BBP™11 Desktop Printer Series

Small, compact and economical, ideal for general purpose product identification, wire and cable marking and laboratory identification.



IPT™ Thermal Transfer Printer Series

The first THT printer in industrial applications to use smart cell technology where the printer communicates with the material ribbon and software.



BradyPrinter™ BP-PR Plus Series

A rugged industrial printed range that is an ideal printing solution that meets the professional needs of Product Identification and Traceability applications in the industrial market.

Features

Recommended Usage Labels per Day	50	100	250	250	1000	500	1500	7000
Resolution (dpi)	203	300	300	300	300	203 / 300	300 / 600	203 / 300 / 600
Print Technology	Thermal Transfer	Thermal Transfer	Thermal Transfer	Thermal Transfer	Thermal Transfer	Thermal Transfer	Thermal Transfer	Thermal Transfer
Print Speed (mm/sec)	12.50	upto 250	25.40	25.40	38.10	12.70	upto 200	–
Max Label Width	19 mm	38.10 mm	38.10 mm	38.10 mm	50.80 mm	118 mm	105.66 mm	116 mm
Min. Label Length (mm)	–	–	–	–	–	6 mm	3.17 mm	5 mm
Max Print Width	16 mm	31.75 mm	36.00 mm	36.00 mm	45.97 mm	108 mm	105.66 mm	105.6 mm
Max Print Length	–	482 mm	–	–	1016 mm	2286 mm	2286 mm	–
Memory RAM Flash	Stores 12 files	10 labels	–	–	200 MB -up to 100,000 labels	8 MB 2MB	64 MB	64 MB 8 MB
Materials Supported	Continuous / 43 Stock parts	Continuous, Die Cut	over 130 stock parts	over 130 stock parts	Over 400 Stock Parts, Continuous, Die Cut and Bulk Label Rolls	Die Cut, Continuous, Notched, Sleeve	Die Cut, Continuous, Sleeve, Notched	Die Cut, Notched, Sleeve, Cont.
Stand Alone Printing (Detached from PC)	Yes	Yes	No	Yes	Yes	Optional	No	By USB Master
Colour Capability	Monocolour	Monocolour	Monocolour	Monocolour	Monocolour	Monocolour	Monocolour	Monocolour
Connectivity	None	USB	USB, Bluetooth & optional Ethernet, WiFi	USB, Bluetooth & optional Ethernet, WiFi	USB	Serial, Parallel, USB 2.0, Internal Ethernet	Serial, USB 2.0 and Ethernet 10/100	Serial, Parallel, USB, Ethernet (Wired and Wireless)
Keyboard	ABC	QWERTY	–	QWERTY	QWERTY	Optional	–	–
Options	–	–	–	–	–	Cutter, Peel Off, Media Holder, Stand-Alone Keyboard	Cutter	Cutter, Peel Off
Weight (kg)	0.75	0.975	1.278	1.40	2.49	2.50	5.90	8.50



Go and watch our videos on <http://www.bradyeurope.com/labid>

BMP™21 HAND-HELD LABEL PRINTER

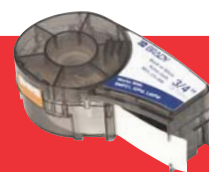
- Why spend time creating labels that are difficult to read and don't stick? With the BMP™21 Hand-held Label Printer, eliminate guesswork and enjoy fast and easy formatting of commonly use label types for marking vial and tubes, bottles, well plates and much more. You can be confident your Brady labels will remain stuck for years. Create clear legible labels with industrial-strength staying power to withstand even the harshest environments. They won't fall off, smear or fade.
- Simple to operate and quick to print.
- The BMP21 is a labelling solution that leads to increased productivity, supreme accuracy and unrivalled quality for a safer and more efficient workplace.
- Robust Hard-wearing Printer
- Hard-wearing design
- 203 dpi thermal transfer print
- Large LCD Display (3 lines of text, 1 line of icons)
- Left or right handed cutter activation
- Magnet and strap accessories
- Flashlight accessory for use in confined or low light areas



BMP™21
LABEL PRINTER

Art. No.	Order Reference	Description
110416	BMP21-AC EUR	AC Adaptor - Europe 220V
110417	BMP21-AC UK	AC Adaptor - UK 240V
110889	BMP21-PRINTER	BMP21™ Label Printer
110890	BMP21-HC	Hard-sided Carry Case
110891	BMP21-MAGNET	Magnet Only Accessory
110892	BMP21-TOOL	Multi-functional Accessory
110937	BMP21-AC	AC Adaptor - US 110V

BMP™21 tapes can be used in the LABPAL™ Printer



BMP™51/BMP™53 LABEL MAKERS

- The BMP51/BMP53 Label Makers are compact, versatile portable printer with built-in Bluetooth® technology for wireless printing. When used in conjunction with the free Brady Mobile App, you can design and print labels with this printer using your Android phone!
- Identify your samples quickly and more efficiently
- Portable/Handheld
- Labels withstand extreme laboratory temperatures and solvents
- Durable built-in cutter that retains the label after it's cut until you need it
- Built-in Bluetooth® or optional Wi-Fi card for wireless printing from a network
- Serialisation feature for quicker aliquots



BMP™51
LABEL MAKER

Art. No.	Order Reference	Description
710894	BMP51 PRINTER KIT EU	BMP51 Printer with Battery Pack - AC Adaptor/Battery Charger - EU
710896	BMP51 PRINTER KIT EU-LM	BMP51 Printer with Battery Pack - AC Adaptor/Battery Charger - EU and LabelMark
710898	BMP51 PRINTER KIT UK	BMP51 Printer with Battery Pack - AC Adaptor/Battery Charger - UK
710900	BMP51 PRINTER KIT UK-LM	BMP51 Printer with Battery Pack - AC Adaptor/Battery Charger - UK and LabelMark
710895	BMP53 PRINTER KIT EU	BMP53 Printer with Battery Pack - AC Adaptor/Battery Charger - EU
710897	BMP53 PRINTER KIT EU-LM	BMP53 Printer with Battery Pack - AC Adaptor/Battery Charger - EU and LabelMark
710899	BMP53 PRINTER KIT UK	BMP53 Printer with Battery Pack - AC Adaptor/Battery Charger - UK
710901	BMP53 PRINTER KIT UK-LM	BMP53 Printer with Battery Pack - AC Adaptor/Battery Charger - UK and LabelMark
142260	BMP-UBP 12V	Universal Li-Ion Battery Pack
114883	M50-71 AC-BC-120V	AC/Battery Charger 120V
710612	M50-71-AC-BC-EU	AC Adaptor - Europe 220V
710613	M50-71-AC-BC-UK	AC Adaptor - UK 240V
143115	M50-BATT-TRAY	Spare Batttery Tray
143114	M50-CABLE	BMP50 Series USB Cable
143109	M50-HC	BMP50 Series Hard Carry Case
143108	M50-MAGNET	BMP50 Series Magnet Accessory
142265	NET-BT	BMP50 Series Bluetooth Network Card
142268	NET- BT-WIFI-LAN	BMP50 Series Bluetooth/WiFi/ LAN Network Card
142267	NET-LAN	BMP50 Series LAN Network Card
142266	NET-WIFI	BMP50 Series Bluetooth/WiFi Network Card
142261	UBP-Li-Ion-AC-120v	Univeral Li-ion Battery Pack with AC Adaptor/Battery Pack US
710902	UBP-Li-Ion-AC-EUR	Univeral Li-ion Battery Pack with AC Adaptor/Battery Pack EU
710903	UBP-Li-Ion-AC-UK	Univeral Li-ion Battery Pack with AC Adaptor/Battery Pack UK



BMP™53
LABEL MAKER



Art. No.	Order Reference	Description
060900	LABXPRT-KEY (INTL)	LABXPRT™ Laboratory Labelling System printer - International Version
060902	LABXPRT-HC-KEY	Hard-sided Carry Case
800746	XPRT-ACUK	AC Adapter UK (for ABC or KEY printers)
800747	XPRT-ACEUR	AC Adapter Europe (for ABC or KEY printers)



This printer can no longer be ordered, but accessories and consumables are still available until further notice.

LABXPRT™ LABORATORY LABELLING SYSTEM

- With Brady's LABXPRT™ Labelling System, you can label your vials, vial tops, slides, well plates and more, quickly and easily with durable materials designed specifically for the laboratory environment. The labels will not fall off or smear, can fit more information and are always legible.
- Recommended for printing 25 to 250 labels at a time
- Continuous and die-cut label styles, including tops, self-laminating and two label combinations
- Drop, Lock & Go Smart Cartridge combines labels and ribbon for a quick and easy change
- Built-in laboratory applications, including vial templates, time and date stamp and auto serialisation for aliquots
- Bar coding capabilities - 2D (only available when connected to software) and linear (code 39 and 128)
- 300 dpi printhead for sharper resolution on small fonts and bar codes
- Memory to store labels
- 140 Greek and laboratory symbols
- AA battery or AC power operation
- USB port for PC Connection
- Mirror image printing for through-dish viewing
- One-touch Time and Date Stamping
- Narrow bar code width to allow more characters on smaller labels



Clear Identification

“Being able to read people’s handwriting was a major problem. Hand labelling was also very slow. We had to write with a felt-tipped marker on a really small space. We decided that an automated system to print labels was definitely in order.”

*Kevin Kershner
Scientist*

Read the full article on <http://www.bradyeurope.com/labid>



BMP™71 LABEL PRINTER



Art. No.	Order Reference	Description
114881	M71-HC	Hard-sided Carry Case
114882	M71-SC	Soft Carry Case
114883	M50-71 AC-BC-120V	AC/Battery Charger 120V
114885	M71-BATT	Spare Battery
114886	M71-CLEAN	Cleaning Kit
114887	M71-ADAPT	Roll Adaptor for TLS/HM
710599	BMP71-QWERTY-EU	BMP71 Label Printer with QWERTY Keyboard - EU Power Supply - 220V*
710600	BMP71-QWERTY-UK	BMP71 Label Printer with QWERTY keyboard - UK Power Supply 240V
710601	BMP71-AZERTY-EU	BMP71 Label Printer with AZERTY Keyboard - EU Power Supply - 220V
710603	BMP71-QWERTZ-EU	BMP71 Label Printer with QWERTZ Keyboard - EU Power Supply - 220V
710604	BMP71-CYRILLIC-EU	BMP71 Label Printer with CYRILLIC Keyboard - EU Power Supply - 220V
710612	M50-71-AC-BC-EU	AC Adaptor - Europe 220V
710613	M50-71-AC-BC-UK	AC Adaptor - UK 240V
710614	M71-QC-EU	Quick Charger - Europe 220V
710615	M71-QC-UK	Quick Charger - UK 240V

* Printer, Hard-sided Carry Case, 2 Label Rolls, 1 Black Ribbon Cartridge, Rechargeable Battery Pack, AC Adaptor, USB Communications Cable, TLS2200® / HandiMark™ Material Roll Adaptor, Quick Start Guide, Product CD (w/ Printer Driver, Tutorials, Full User's Guide), Cleaning Kit

BMP™71 PORTABLE LABEL PRINTER

- The BMP71 mobile label printer can print on more than 30 different types of label material including 7 specifically for a laboratory environment - all designed with Brady's industrial strength durability.
- The powerful BMP71 prints faster than any other printer in it's class (38 mm/sec). Don't wait longer than necessary for your labels.
- The BMP71 has a full keyboard, available in 4 versions, QWERTY, AZERTY, QWERTZ and CYRILLIC. Use both your hands to type your text instead on one finger and save you time!
- The enlarged colour screen of the BMP71 enables you to see the whole label at once, helping you to compose the label in the most efficient way, eliminating trial and error.
- The BMP71 printer is your essential tool that handles all your label printing needs - One smart printer to print it all.



BMP™71 PORTABLE LABEL PRINTER



Go and watch our videos on
<http://www.bradyeurope.com/labid>

BBP™11 LABEL PRINTER



BBP™11 DESKTOP THERMAL TRANSFER PRINTER

- The BBP11 is a compact desktop printer which provides high quality thermal transfer printing at a low cost. The Brady BBP11 is an entry level thermal transfer printer for vial and tube labels, Slide labels, bottles and many more.
- Identifying your laboratory equipment has never been so easy. Traceability of company assets is an absolute must these days and the BBP11 provides this solution.
- The BBP11 offers the best mix of high quality printing at a low cost price. The printer does not only yield high performance with durable and reliable output, it also provides important savings in desk space.
- This series is the ideal solution for low-to-medium volume printing, while offering a printout speed of up to 127mm per second.
- The standard internal ethernet port allows you to integrate your printer quickly into any application.
- USB Serial and parallel interfaces standard

Art. No.	Order Reference	Description
361057	BBP11-24LCEU	203 dpi printer with pre-installed cutter – EU version
361058	BBP11-34LCEU	300 dpi printer with pre-installed cutter – EU version
361059	BBP11-24LCUK	203 dpi printer with pre-installed cutter – UK version
361060	BBP11-34LCUK	300 dpi printer with pre-installed cutter – UK version
361061	BBP11-C	Cutter
361062	BBP11-SK	Stand Alone Keyboard
361064	BBP11-VP	Peel and Present
361065	BBP11-U	Material Holder
361066	BBP11-24L - 203dpi - English	BBP11 Printer - European Version - 220V
361069	BBP11-24L - 203 dpi - UK	BBP11 Printer - UK Version - 240V
361072	BBP11-34L - 300dpi - English	BBP11 Printer - European Version - 220V
361075	BBP11-34L - 300 dpi - UK	BBP11 Printer - UK Version - 240V



B-492 and BBP11

“The BBP11 prints very quickly, providing a highly efficient way of producing labels for all the multiple tubes we need to freeze for each animal sample. The print quality looks very clear and neat, and we can get more information on our labels than before.

Brady's FreezerBondz™ labels not only withstand the long-term storage in liquid nitrogen required for samples going into the Frozen Ark, but they can be applied to frozen surfaces. This very useful property has enabled us to add labels to some tubes which had been stored with inadequate identification.”

Institute of Zoology, Zoological Society of London, UK

Read the full article on <http://www.bradyeurope.com/labid>





IP™ THERMAL TRANSFER PRINTER

- Load, Click, Print - it's that easy
- Brady's IP™ thermal transfer printing system is designed to make printing faster, easier and more efficient - helping you create a lean Just-In-Time production process.
- With reduced set-up time, easy material loading and intuitive label design software, laboratories can print their labels on-demand. The IP Printing system offers material recognition, automatic software formatting and user-friendly printer features

COMMUNICATION INTERFACES

- RS-232 Serial Port
- USB 2.0 High Speed Slave
- 10/100 Ethernet print server option
- RS-422, RS-484, 1,200 up to 230,400 Baud/8 bit
- Peripheral Connection USB Master for Keyboard and Scanner 2X

Art. No.	Order Reference	Description
360814	BP-THT-IP300-EN	IP™ Printer - 300 dpi - 220 V
360815	BP-THT-IP300-C-EN	IP™ Printer - 300 dpi with Cutter- 220 V
360817	BP-THT-IP600-EN	IP™ Printer - 600 dpi - 220 V
360818	BP-THT-IP600-C-EN	IP™ Printer - 600 dpi with Cutter - 220 V
360844	BP-THT-IP300-UK	IP™ Printer - 300 dpi - 240 V
360845	BP-THT-IP300-C-UK	IP™ Printer - 300 dpi with Cutter - 240 V
360847	BP-THT-IP600-UK	IP™ Printer - 600 dpi - 240 V
360848	BP-THT-IP600-C-UK	IP™ Printer - 600 dpi with cutter - 240 V
361080	BP-THT-IP300-WLAN-EN	IP™ Printer - 300 dpi with WIFI - English
361081	BP-THT-IP600-WLAN-EN	IP™ Printer - 600 dpi with WIFI - English
361082	WLAN-Card 802.11b/g	Wireless Ethernet Card for Brady IP™ Printer



IP Printer

“It has proved itself very reliable, with no problems to date. We have been using the printer with BradySoft™ Ultimate software, which has also proved to be very flexible, allowing us to tailor our changing printing requirements with the minimum of effort.”

*Blood Sciences Department,
Frimley Park Hospital NHS Foundation Trust, UK*

Read the full article on <http://www.bradyeurope.com/labid>

BP-PR200 PLUS

BP-PR300 PLUS

BP-PR600 PLUS



BRADYPRINTER™ BP-PR PLUS PRINTER

• The BradyPrinter™ model BP-PR PLUS series is a rugged industrial printer range that is an ideal printing solutions that meets the professional needs of Product Identification and Traceability applications in the laboratory environment. The BP-PR PLUS also allows frequent change for materials which use different core diameters, yet maintain critical print registration.

Features

- Stand-Alone Mode
- Easy Calibration
- Easy change of material core sizes
- Heat Management
- Large Graphic Display
- Navigator Pad
- Easy Programming Language
- Wide Material Range
- Interchangeable Printheads

Art. No.	Order Reference	Description
360540	BP-THT-PR200Plus	BradyPrinter™ 203 dpi Printer - 220V
360541	BP-THT-PR200Plus-P	BradyPrinter™ 203 dpi Printer - 220V + Peel Off Unit
360542	BP-THT-PR300Plus	BradyPrinter™ 300 dpi Printer - 220V
360543	BP-THT-PR300Plus-P	BradyPrinter™ 300 dpi Printer - 220V + Peel Off Unit
360544	BP-THT-PR600Plus	BradyPrinter™ 600 dpi Printer - 220V
360545	BP-THT-PR600Plus-P	BradyPrinter™ 600 dpi Printer - 220V + Peel Off Unit
360588	BP-THT-PR200Plus-UK	BradyPrinter™ 203 dpi Printer - 240V
360589	BP-THT-PR600Plus-P-UK	BradyPrinter™ 203 dpi Printer - 240V + Peel Off Unit
360590	BP-THT-PR300Plus-UK	BradyPrinter™ 300 dpi Printer - 240V
360591	BP-THT-PR300Plus-P-UK	BradyPrinter™ 300 dpi Printer - 240V + Peel Off Unit
360592	BP-THT-PR600Plus-UK	BradyPrinter™ 600 dpi Printer - 240V
360593	BP-THT-PR600Plus-P-UK	BradyPrinter™ 600 dpi Printer - 240V + Peel Off Unit



To find out how Brady helps some of the world's leading research laboratories develop more efficient labelling protocols visit <http://www.bradyeurope.com/labid>





LabelMark™
LABELING SOFTWARE

LabelMark™ LABORATORY LABELLING SOFTWARE

LabelMark software features a lab-friendly interface and hundreds of parts and graphics categorised by common lab applications making creating legible, durable and accurate labels quick and easy.

- Easy-to-use Wizards to create new files and templates
- Superscript and subscript characters
- Database import capabilities with refresh feature to ensure data integrity
- 2D bar coding and linear bar coding
- Multi-label data entry view
- Compatibility with a variety of Brady printers including LABXPRT, BMP71, TLS models and all Windows®-based printers

Art. No.	Order Reference	Description
622242	LM5 Std	LabelMark 5 Standard Labelling Software
622243	LM5 Pro	LabelMark 5 Pro



CODESOFT™

CodeSoft™ is a very powerful, feature-rich design software. It has the most text editing and bar code features, plus it is the best choice for advanced database importation and integration with 3rd party software programs - like LIMS.

- Over 100 Bar code symbologies including linear and 2D
- Robust data sourcing capabilities
- View labels and data in the same screen
- Label Comparison tool for previewing labels at design or production stages
- OLE automation supports object integration from any 3rd party Windows® application
- Enhanced Shape Tool makes using graphics and shapes on your labels a snap
- CodeSoft Pro - is for users printing text, images and bar codes on one to three printers
- CodeSoft Enterprise - is for user printing from databases and existing systems
- CodeSoft Network - is for users who want to manage licenses from a server

Order Reference

CodeSoft™ Enterprise	Full program with all features. Available in stand-alone and network versions (multiples of 5 users)
CodeSoft™ Pro	Lower cost alternative to Enterprise version. Robust program with the same text, bar code, graphic capabilities as Enterprise and most of the same "variable" capabilities, but without the advanced levels of security and bolt-on complimentary applications.



CODE READER® SCANNERS

Scanners improve sample tracking, eliminate human error and save an enormous amount of time during both labelling and retrieving samples.

Code Reader Scanners combines the industry's best imaging technology with a graphic display and rugged keyboard that makes this new standard in small, fast user-friendly data and inventory management. Now the best portable all-symbology bar code reader in the industry is even more versatile, with the addition of information display and keyboard entry functions.

There are 2 interface options:

Cabled (Basic)

Plug-an-play interface. Available with USB (standard), PS2 or RS232 interfaces. All cables use rugged automatic locking adapters that allow users to change cables while preventing inadvertent disconnections.

Batch (Basic + Battery)

Cables and Store and Forward capacity in one unit. Simply detach the scanner from the computer, capture data remotely and reconnect to the computer. When reconnected, the scanner will automatically download data to the active application. When connected via the included USB cable, the unit operates as a standard keyboard wedge.

Art. No.	Order Reference	Description	Usage
361109	CR1400 + 6ft USB	CR1400 Scanner with 6ft USB cable	Cabled
361107	CR2500 Unit +BH2 + 6FT Cable	CR2500 Scanner with Battery and 6ft USB	Batch & Cabled
361108	CR2500 + 6ft USB	CR2500 Scanner with 6ft USB	Cabled
361106	CR3500 Unit +BH2 + 6FT Cable	CR3500 Scanner with Battery and 6ft USB	Batch & Cabled
361102	CR2500 Metal Stand & Base	Metal Stand and Base for CR2500 Scanner	-
105023	CR3500 Metal Stand & Base	Metal stand and Base for CR3500/2500 Scanner	-
361103	CR1400 Metal Stand & Base	Metal stand and Base for CR1400 Scanner	-

BENEFITS OF BAR CODING AND SCANNING

- Quickly identify and retrieve samples
- Eliminate human error with log-in and inventory data entry
- Accurately track samples and chemicals from receipt to disposal
- Automatically update sample information







Take advantage of the following features:

- Dual field optics, both high density and wide field in the same unit.
- Glare reduction technology for reading codes on shiny surfaces.
- Reads all linear, stacked and 2D matrix symbologies.
- Dynamic Optimization Technology



For further information on our Scanner range, please request our Scanner brochure.

LINEAR VS. 2-DIMENSIONAL BAR CODES

7 mil Examples	10 mil Examples	Symbol Size (mm) Row x Column	Bar Code Data Capacity		Built-in Error Correction
			Numeric	Alphanumeric	
 3.43 mm 2D / Data Matrix Bar Code	 4.57 mm 2D / Data Matrix Bar Code	18 x 18	36	25	YES (ECC200)
 4.95 mm 2D / Data Matrix Bar Code	 6.60 mm 2D / Data Matrix Bar Code	26 x 26	88	64	YES (ECC200)
 25.40 mm Linear / Code 128 Bar Code	 31.75 mm Linear / Code 128 Bar Code	31.75	10	10	NO

Hazardous Substance Symbols



- Highly visible symbols are ideal for labelling containers and packaging, which hold hazardous substances
- The new GHS/CLP symbols were introduced in the EU on the basis of the GHS/CLP regulation (Classification, Labelling and Packaging) in January 2009
- GHS/CLP replaces the HSID labelling. The orange coloured hazardous materials pictograms used until now are being replaced with new diamond-shaped pictograms on a white background with a red border



PIC 1801 (GHS01)	PIC 1802 (GHS02)	PIC 1803 (GHS03)	PIC 1804 (GHS04)	PIC 1805 (GHS07)	PIC 1806 (GHS09)	PIC 1807 (GHS08)	PIC 1808 (GHS05)	PIC 1809 (GHS06)
Explosives Self Reactives Organic Peroxides	Flammables Self Reactives Pyrophorics Self-Heating Emits Flammable Gas Organic Peroxides	Oxidisers	Gases Under Pressure	Irritant Dermal Sensitizer Acute Toxicity (Harmful) Narcotics Effects Respiratory Tract Irritation	Environmental Toxicity	Carcinogen Respiratory Sensitizer Reproductive Toxicity Target Organ Toxicity Mutagenicity Aspiration Toxicity	Corrosives	Acute Toxicity (Severe)

HAZARDOUS SUBSTANCE SYMBOL LABELS

Order Reference	Label Width A (mm)	Label Height B (mm)	Labels per Cartridge/Roll	Layout Card/Roll
PIC 1801-40*40-B7541-CRD	40.00	40.00	20	Card
PIC 1802-40*40-B7541-CRD	40.00	40.00	20	Card
PIC 1803-40*40-B7541-CRD	40.00	40.00	20	Card
PIC 1804-40*40-B7541-CRD	40.00	40.00	20	Card
PIC 1805-40*40-B7541-CRD	40.00	40.00	20	Card
PIC 1806-40*40-B7541-CRD	40.00	40.00	20	Card
PIC 1807-40*40-B7541-CRD	40.00	40.00	20	Card
PIC 1808-40*40-B7541-CRD	40.00	40.00	20	Card
PIC 1809-40*40-B7541-CRD	40.00	40.00	20	Card
PIC 1801-50*50-B7541-RLL-C	50.00	50.00	250	Continuous Roll
PIC 1802-50*50-B7541-RLL-C	50.00	50.00	250	Continuous Roll
PIC 1803-50*50-B7541-RLL-C	50.00	50.00	250	Continuous Roll
PIC 1804-50*50-B7541-RLL-C	50.00	50.00	250	Continuous Roll
PIC 1805-50*50-B7541-RLL-C	50.00	50.00	250	Continuous Roll
PIC 1806-50*50-B7541-RLL-C	50.00	50.00	250	Continuous Roll
PIC 1807-50*50-B7541-RLL-C	50.00	50.00	250	Continuous Roll
PIC 1808-50*50-B7541-RLL-C	50.00	50.00	250	Continuous Roll
PIC 1809-50*50-B7541-RLL-C	50.00	50.00	250	Continuous Roll
PIC 1801-70*70-B7541-CRD	70.00	70.00	6	Card
PIC 1802-70*70-B7541-CRD	70.00	70.00	6	Card
PIC 1803-70*70-B7541-CRD	70.00	70.00	6	Card
PIC 1804-70*70-B7541-CRD	70.00	70.00	6	Card
PIC 1805-70*70-B7541-CRD	70.00	70.00	6	Card
PIC 1806-70*70-B7541-CRD	70.00	70.00	6	Card
PIC 1807-70*70-B7541-CRD	70.00	70.00	6	Card
PIC 1808-70*70-B7541-CRD	70.00	70.00	6	Card
PIC 1809-70*70-B7541-CRD	70.00	70.00	6	Card
PIC 1801-100*100-B7541-CRD	100.00	100.00	4	Card
PIC 1801-100*100-B7541-RLL-DC	100.00	100.00	250	Individual Markers on a Roll
PIC 1802-100*100-B7541-CRD	100.00	100.00	4	Card
PIC 1802-100*100-B7541-RLL-DC	100.00	100.00	250	Individual Markers on a Roll
PIC 1803-100*100-B7541-CRD	100.00	100.00	4	Card
PIC 1803-100*100-B7541-RLL-DC	100.00	100.00	250	Individual Markers on a Roll
PIC 1804-100*100-B7541-CRD	100.00	100.00	4	Card
PIC 1804-100*100-B7541-RLL-DC	100.00	100.00	250	Individual Markers on a Roll
PIC 1805-100*100-B7541-CRD	100.00	100.00	4	Card
PIC 1805-100*100-B7541-RLL-DC	100.00	100.00	250	Individual Markers on a Roll
PIC 1806-100*100-B7541-CRD	100.00	100.00	4	Card
PIC 1806-100*100-B7541-RLL-DC	100.00	100.00	250	Individual Markers on a Roll
PIC 1807-100*100-B7541-CRD	100.00	100.00	4	Card
PIC 1807-100*100-B7541-RLL-DC	100.00	100.00	250	Individual Markers on a Roll
PIC 1808-100*100-B7541-CRD	100.00	100.00	4	Card
PIC 1808-100*100-B7541-RLL-DC	100.00	100.00	250	Individual Markers on a Roll
PIC 1809-100*100-B7541-CRD	100.00	100.00	4	Card
PIC 1809-100*100-B7541-RLL-DC	100.00	100.00	250	Individual Markers on a Roll

HAZARDOUS SUBSTANCE SYMBOLS

Identification of Hazardous Substances

Each individual container which holds hazardous substances must be clearly marked to ensure safety in the work place. Self-adhesive white paper labels are supplied on A4 sheets which can easily be printed with substance information on an office printer. The appropriate hazard symbol label can then be stuck to the printed paper label and then finally a clear, self adhesive, polyester overlamine can be stuck over the top to fully protect the information printed underneath

Labels for dangerous substances must show the following information

- name of the dangerous substance(s)
- standard symbol or danger symbol
- risk text describing the specific danger
- text informing how risk can be reduced
- name and address of the manufacturer

It is the legal duty of all employees to mark dangerous substances!

This legal requirement reflects on all stages of the production process and subsequent use: stocking, packaging, mixing, transporting etc. Legislation dictates how products should be labelled



BLANK LABELS

Order Reference	Label Width A (mm) x Label Height B (mm)		Labels/Package
LB 74x52/76205	52.00 x 74.00	Paper	512 Labels per pack
LB 105x74/76205	74.00 x 105.00	Paper	504 Labels per pack
LB 148x105/76205	105.00 x 148.00	Paper	500 Labels per pack
LB 210x148/76205	148.00 x 210.00	Paper	500 Labels per pack

POLYESTER LAMINATE FOR PROTECTION

Order Reference	Label Width A (mm)	Label Height B (mm)		Labels/Package
S84X62/966	62.00	84.00	Transparent Polyester Overlamine	2500
S115X84/966	84.00	115.00	Transparent Polyester Overlamine	1000
S158X115/966	115.00	158.00	Transparent Polyester Overlamine	500
S220X158/966	158.00	220.00	Transparent Polyester Overlamine	500



For more information on CLP labeling solutions, check www.bradyeurope.com/clp



PORTABLE SPILL KITS

- SKH-Mini - A fully disposable spill kit to clean up small chemical spills quickly, easily and without risk on injuries
- Highly visible green colour
- The autoclavable disposal bag is heat resistant up to 145°C and therefore guarantees a safe disposal of laboratory waste
- Adsorbs chemicals, dangerous liquids, water & oil based fluids
- Suitable for spills up to 1.7 litres
- The specially designed disposable brush is intended to sweep up any broken glass or debris allowing a safe clean up without risk of injuries
- Thanks to the compact design, the SKH-MINI can easily be placed in areas where spills are most likely to happen
- Protective gloves are powder free, have roughened fingertips. Increased tear resistance and a good chemical resistance for more safety

Order Reference	Description	Additional Features	QTY	Adsorption Capacity (Ltrs)	Weight (kg)
SKH-MINI	ADR Spill Kit	Contents: 2 pads 41 cm x 51 cm, 1 pair of disposable chemical protective gloves, 1 autoclavable disposal bag, 1 disposable brush, 1 multilingual instruction guide	4/Box	6.8*	2.1

* = 4 x 1.7 liters



PILLOWS

- Hazwuk Pillows - For adsorbing spills & leaking liquids in tight spaces
- Adsorb chemicals, acids and bases
- Good for large spills once contained
- Ideal for use in packaging for extra protection during transport
- 2 different sizes to fit any application

Order Reference	Description	QTY	Size - Width (mm)	Size - Length (mm)	Adsorption Capacity (Ltrs)	Weight (kg)
HAZ99	PILLOW	32/Box	250.00 mm	250 mm	58	4.5
HAZ1818	PILLOW	16/Box	480.00 mm	480 mm	105	9.1
HAZ1818-2	PILLOW	8/Box	480.00 mm	480 mm	53	4.5



UN Booms

- UN Booms - The best way to adsorb and contain large spills of chemicals and hazardous liquids
- Adsorbs chemicals, acids and bases as well as oils and water based liquids
- Metal clips and rings allows for easy linking of booms
- Inner rope secured with 4 clips provides strength
- Stronger outer sleeve for durability
- Inner sleeves keeps the adsorbent material intact with the boom

Order Reference	Description	QTY	Size diam (mm)	Size - Length (m)	Adsorption Capacity (Ltrs)	Weight (kg)
UN810	BOOM, Ø 20 cm x 3 m	4/bale	200.00 mm	3.00 m	263	18.3
UN510	BOOM, Ø 13 cm x 3 m	4/bale	130.00 mm	3.00 m	118	8.3



Socs

- Hazwik Socs - Confine & prevent hazardous spills from spreading
- Adsorb chemicals, acids & bases
- Different lengths in order to always have the right size for your application
- Flexible design is easily moulded around machines and spills

Order Reference	Description	QTY	Size diam (mm)	Size - Length (mm)	Adsorption Capacity (Ltrs)	Weight (kg)
HAZ412	SOC, Ø 7.6 cm x 122 cm	12/Box	76.00 mm	1220 mm	45	5.3
HAZ806	SOC, Ø 7.6 cm x 244 cm	6/Box	76.00 mm	2440 mm	48	5.5
HAZ124	SOC, Ø 7.6 cm x 122 cm	4/Box	76.00 mm	3660 mm	45	5.3



UN PADS AND ROLLS

For use when chemical and hazardous liquids are involved!

- Adsorb a wide range of chemicals including acids and caustics
- One-sided spunbond gives extra strength as well as lower lint
- Chemically inert: product does not degrade or cause a dangerous chemical reaction with the adsorbed liquid
- Green colour alerts workers that product is being used for hazardous liquids
- Green colour also allows the user to identify and separate hazardous waste for disposal, resulting in lower disposal costs
- Perforated for flexibility - tear at the perforations for smaller sized pads, to use only what you need



Order Reference	Description	QTY	Size - Width (mm)	Size - Length (mm)	Adsorption Capacity (Ltrs)	Weight (kg)
UN1212-E	PADS, 30 cm x 30 cm, Medium weight, bonded, 50 pads/bag-4 bags/disp.box	200/Box	300.00 mm	300 mm	76	6.7
UN100-E	PADS, 41 cm x 51 cm, Medium weight, perforated & bonded	100/Box	510.00 mm	410 mm	88	7.1



Order Reference	Description	QTY	Size - Width (mm)	Size - Length (m)	Adsorption Capacity (Ltrs)	Weight (kg)
UN15-DPS-E	ROLL, 38 cm x 22 m, Medium weight, double perforated & bonded	1/Dispenser Box	380.00 mm	22.00 m	35	3.6
UN15-2DP-E	ROLL, 38 cm x 46 m, Medium weight, double perforated & bonded	2/Box	380.00 mm	46.00 m	147	11.3
UN15-DP-E	ROLL, 38 cm x 46 m, Medium weight, double perforated & bonded	1/Dispenser Box	380.00 mm	46.00 m	73	6.3
UN30-DP-E	ROLL, 76 cm x 46 m, Medium weight, double perforated & bonded	1/Box	760.00 mm	46.00 m	147	11.8



SPC - Sorbent Products

Your partner in helping your business guard against the leaks, drips and spills that create safety and environmental hazards in the workplace with quality sorbent products.

Contact your Brady Distributor to receive a copy of the SPC catalogue



MINI-MARKERS

- The Mini Marker (150 x 12 mm) has been specially developed by Brady for the identification of small pipes. Ideal for marking Piped Medical Gases, these markers are made from thin, flexible polyester (B-7541). They are sold by the card, with 5 markers per card.
- For Pipes with a diameter from 6 to 20mm
- Many legends available - please visit www.bradyeurope.com for full listing

Label Width A (mm)	Label Height B (mm)	Letter height (mm)	Labels per Cartridge/Roll
150.00	12.00	6.5	5



SAFETY SIGNS ON ROLLS - LAMINATED POLYESTER

- Material: Laminated Polyester
- Number of signs per roll: 250
- Available Sizes: Triangular with sides of 25, 50 or 100 mm



Size (Triangle Side)	PIC 302	PIC 303	PIC 304	PIC 312
25 mm	227327	800100	251955	227333
50 mm	227355	800101	223315	227361
100 mm	227302	800102	223316	227308



Storage Unit for Safety Glasses



Eye Protection Storage Unit

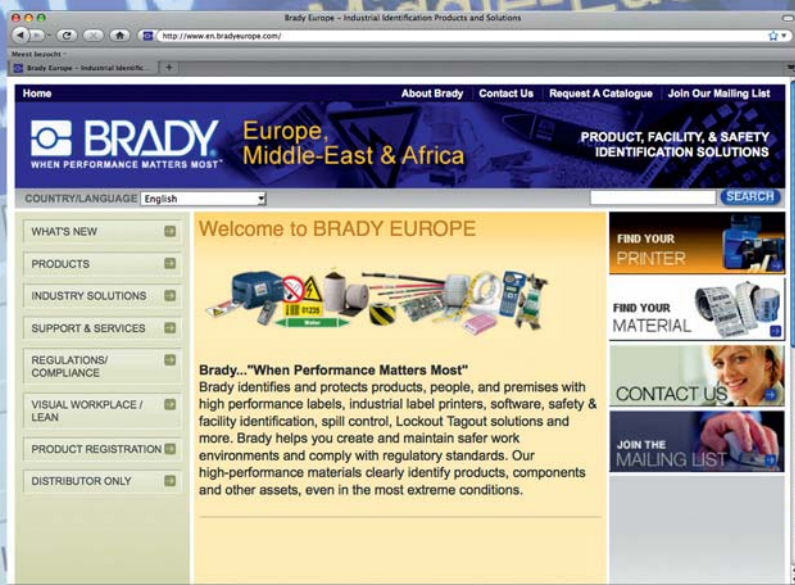
STORAGE UNITS FOR EYE PROTECTION EQUIPMENT

- Storage units for Visitor Safety Equipment
- Ensure the safety of your staff and your visitors!
- Safe, clean storage of eye protection at work. Ideal for safety goggles and safety glasses. Labelled with appropriate safety symbol for quick and easy identification.
- Place either of these units at your reception desk, at the entrance of buildings or at the start of a danger zone where wearing specific safety equipment is obligatory: labs, workshops, etc., especially for visitors and maintenance personnel.
- Can be attached with adhesive or screws:
- 2 Styles available, please visit www.bradyeurope.com for further details
- Eye protection storage unit

Art. No.	Description	Label Height B (mm)	Label Width A (mm)	Size - Depth (mm)
223933	Storage Unit for Visitor Safety Equipment	297.00	210.00	-
224045	Storage Unit	315.00	236.00	200

Surfing www.bradyeurope.com is a simple, efficient and timesaving way to learn more about BRADY products and applications, industry developments, events, promotions, etc. anytime, anywhere.

For looking up technical data sheets, downloading upgrades to your Brady printers and software or fast registration of your Brady products, there's just one address: www.bradyeurope.com



For Laboratory Identification Solutions, visit: www.bradyeurope.com/labid

BRADY EMEA

BRADY Africa

361 Olympic Duel
Northlands Business Park
Newmarket Road
Randburg
Tel: +27 11 704 3295
Fax: +27 86 501 7775

BRADY Benelux

Industriepark C/3
Lindestraat 20
9240 Zele, Belgium
Tel. +32 (0) 52 45 78 11
Fax +32 (0) 52 45 78 12

Brady Central & Eastern Europe

Na Pántoch 18
831 06 Bratislava, Slovakia
Tel. +421 2 3300 4800
Fax +421 2 3300 4801

BRADY Denmark

Svendborgvej 39D
5260 Odense S
Tel. +45 66 14 44 00
Fax +45 66 14 44 50

BRADY France

Parc EURO CIT
45, avenue de l'Europe
59436 Roncq Cedex
Tel. +33 (0) 3 20 01 08 70
Fax +33 (0) 3 20 01 08 76

BRADY Germany

Büchenhöfe 2
63329 Egelsbach
Tel. +49 (0) 6103 7598 660
Fax +49 (0) 6103 7598 670

BRADY Hungary

Puskás Tivadar u. 4.
2040 Budaörs
Tel. +36 23 500 275
Fax +36 23 500 276

BRADY Italy

Via Degli Abeti 44
20064 Gorgonzola (MI)
Tel. +39 02 26 00 00 22
Fax +39 02 25 75 351

BRADY Middle East FZE

PO BOX 18015
Jebel Ali, Dubai, UAE
Tel. +971 4881 2524
Fax +971 4881 3183

BRADY Norway

Kjeller Vest 2
2007 Kjeller
Tel: +47 70 13 40 00
Fax: +47 70 13 40 01

BRADY Spain & Portugal

Diputación, 260
08007 Barcelona, Spain
Tel. + 34 900 902 993
Fax + 34 900 902 994

BRADY Sweden

Vallgatan 5
170 67 Solna
Tel. +46 (0) 8 590 057 30
Fax +46 (0) 8 590 818 68

BRADY Turkey

Selvili Sok. No: 3/4
4. Levent Istanbul 34330
Tel. +90 212 264 02 20 / 264 02 21
Fax +90 212 270 83 19

BRADY UK & Ireland

Wildmere Industrial Estate
Banbury, Oxon – OX16 3JU, UK
Tel. +44 (0) 1295 228 288
Fax +44 (0) 1295 228 100



BRADY WORLDWIDE

Australia	612-8717-6300
Brazil	55-11-3686-4720
Canada	1-800-263-6179
China (Beijing)	86-10-6788-7799
China (Shanghai)	86-21-6886-3666
China (Wuxi)	86-510-528-2222
Hong Kong	852-2359-3149
Japan	81-45-461-3600
Korea	82-31-451-6600
Latin America	1-414-540-5560
Malaysia	60-4-646-2700
Mexico	525-399-6963
New Zealand	61-2-8717-2200
Philippines	63-2-658-2077
Singapore	65-6477-7261
Taiwan	886-3-327-7788
Thailand	66-2-793-9200
USA	1-800-537-8791

Your distributor



EUR-M-513-ENa

BRADY
WHEN PERFORMANCE MATTERS MOST™

© 2013 W.H. BRADY Corporation. All rights reserved